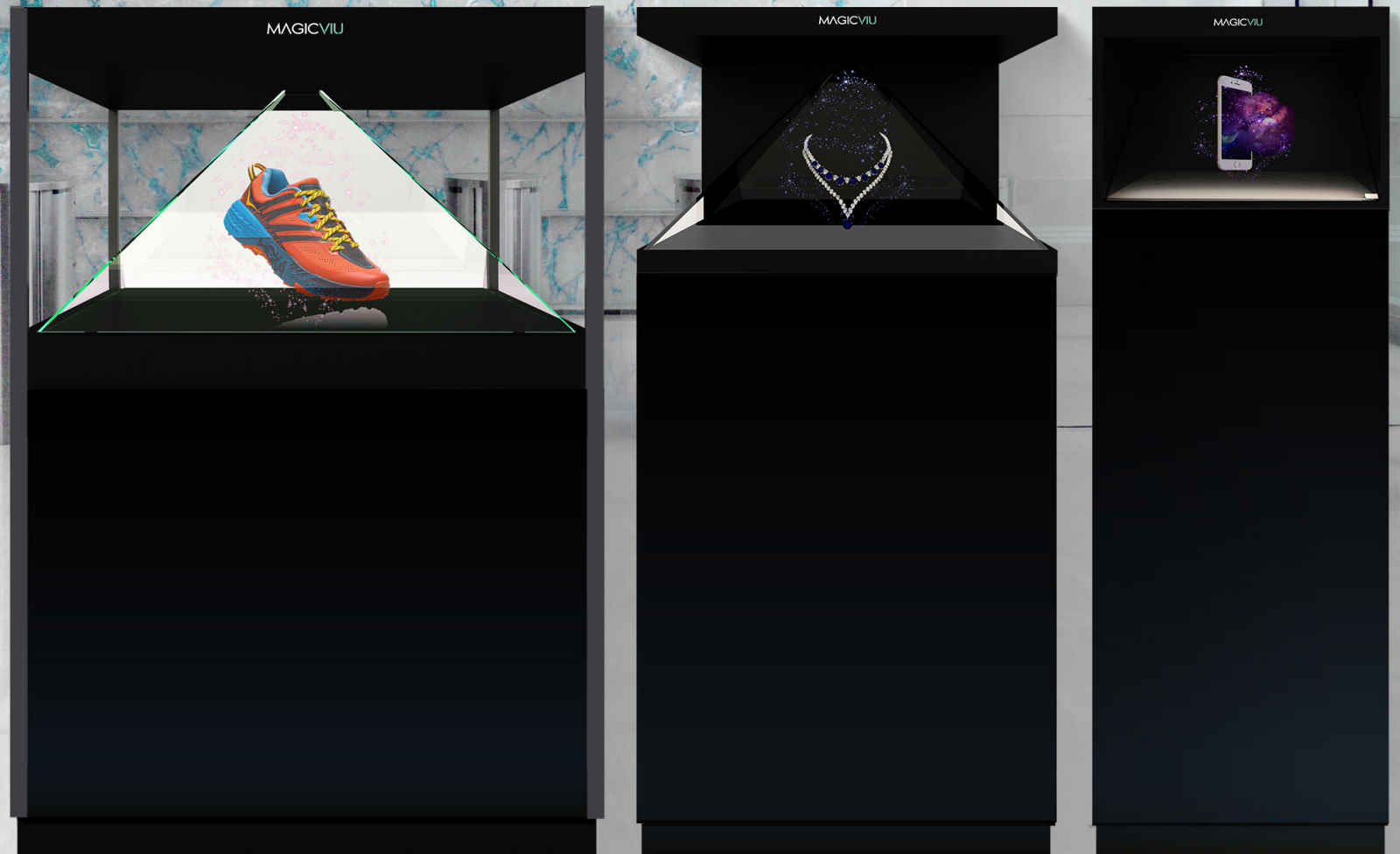


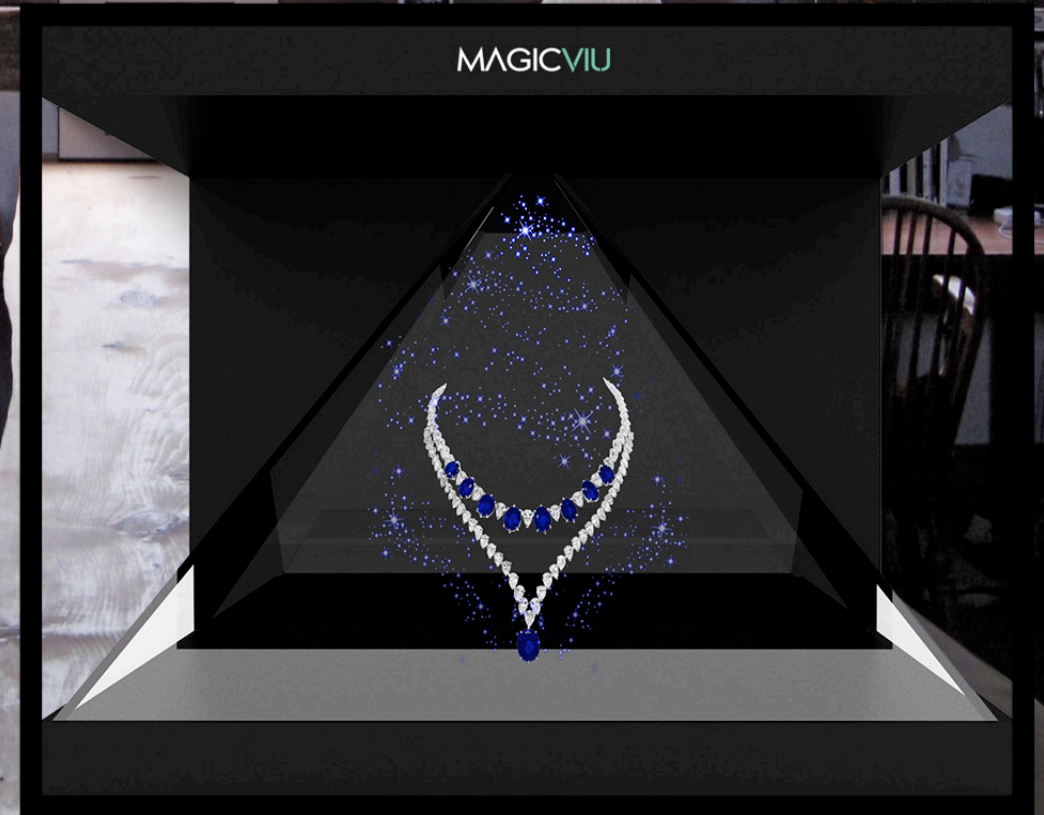
Hologram Displays

3D Hologram Display SHOWCASES



Designed as portable hologram machines that feature 3D content as if it were floating in air.

The holographic display showcase/cabinet is a 3D platform fully integrated that combines the most advanced technologies of processing of image with a modern window counter. This allow focus the attention on the product and show to your costumer in a unique way. There are not only models of hologram, but combination of real output with projections of holograms inside the case. Our 3D holographic window display with animations in real time brights clarity and visibility, encouraging its display customizing the size to your needs as a customer. This advertising is ideal for museums, hall, shop windows, exhibitions POS, malls, and events.



**“ Marketing is no longer about
the stuff that you make,
but about the stories you tell. ”**

- Seth Godin

How does it work?

3D holographic displays make it possible to create a visual brand experience that harnesses power of neuromarketing. The seemingly free-floating holograms have a natural ability to make people stop and pay attention in any crowded setting, whether it be in a **retail store**, at an **expo** or in **public spaces**.

When looking at a holographic display, the brain is instantly tricked by the illusion of having a physical object or real environment mixed with the three-dimensional digital overlay. The visual experience immediately evokes emotions and triggers the senses to fire up the activity in the cortex, essentially making the viewer process and retain the information that is communicated better.



Features

- ◊ Visually stunning product display
- ◊ Combines holographic 3D content with physical products
- ◊ Bright and free floating holographic picture quality
- ◊ Superior exposure and branding
- ◊ “Plug and Play” easy setup
- ◊ Easy change of content by remote
- ◊ Flight case package for save transportation
- ◊ Available in different sizes: small, medium, large or custom
- ◊ Full HD resolution
- ◊ Built-in sound
- ◊ Adjustable LED light



180° Showcase

180° holographic showcase is also known as single-sided holographic projection because its visible range is only 180°, viewed from the front only. The 180-degree holographic imaging technology utilizes the principles of light refraction and diffraction to records and restore the real impression of people or object through a series of techniques, and reproduce them on the holographic film to achieve the realistic and dynamic effect.

Unlike the 270° & 360° showcases, the 180° showcase works in a bright surrounding environment due to the enclosed design makes it the ideal one to use for events & exhibitions or public bright areas.



Horizontal Counter Top Showcase



Horizontal Free Standing Showcase

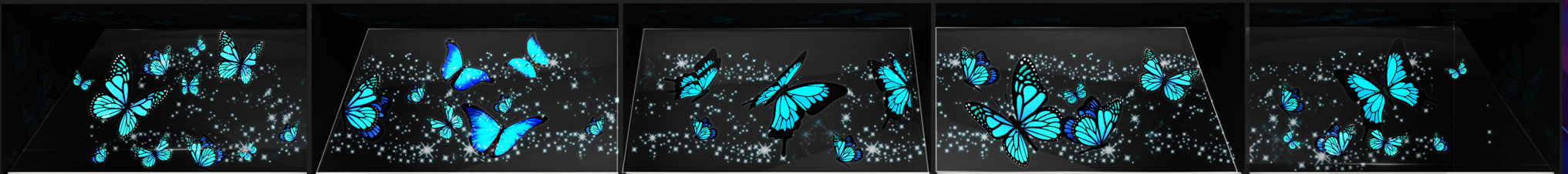


Vertical Large Showcase

MAKE AN IMPACT

IMPACT. This unique feature makes it possible to connect multiple 180° showcases, allowing the 3D content to flow seamlessly from one display to others. When communicating your message with **IMPACT**, you open up to a new world of visual creativity. We can create a flow of holographic animations moving from one display to the next and back, or we could have a wall of displays in a store front window, each showing a little part of something bigger, coming together in the grand view of all the assembled displays.

MAGICVIU



75" & 86" Vertical Showcases

Create an amazing immersive virtual presenter using a wall built-in vertical 180° hologram showcase.

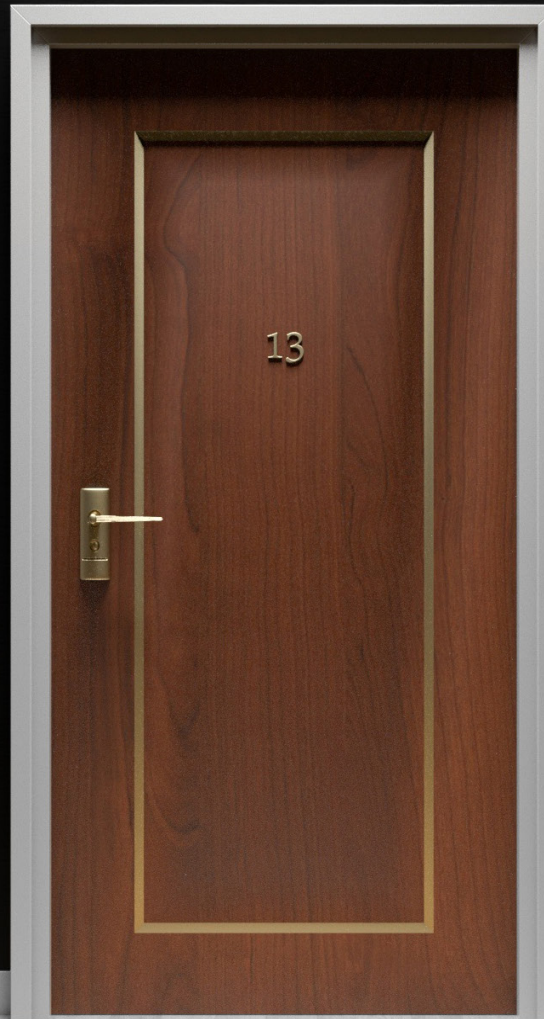
Works 24/7

Virtual Presenter doesn't need a break. It's always attentive and friendly, never forgets things or ever gets distracted.

Virtual Receptionist

Product Specialist

Virtual Concierge



180° Showcases Specification



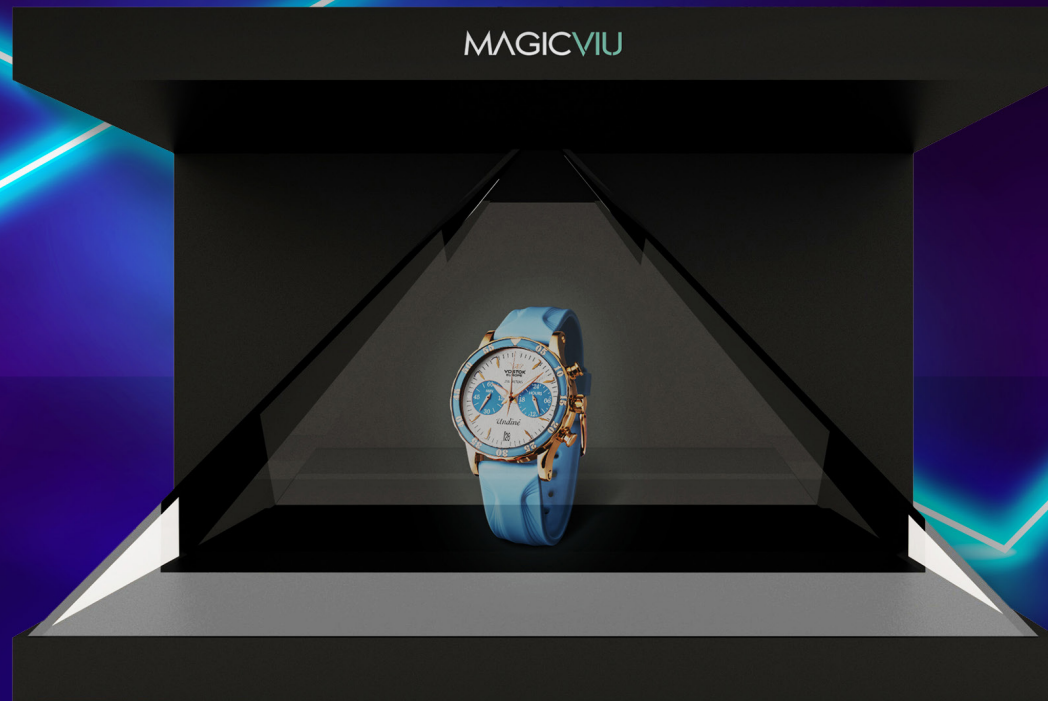
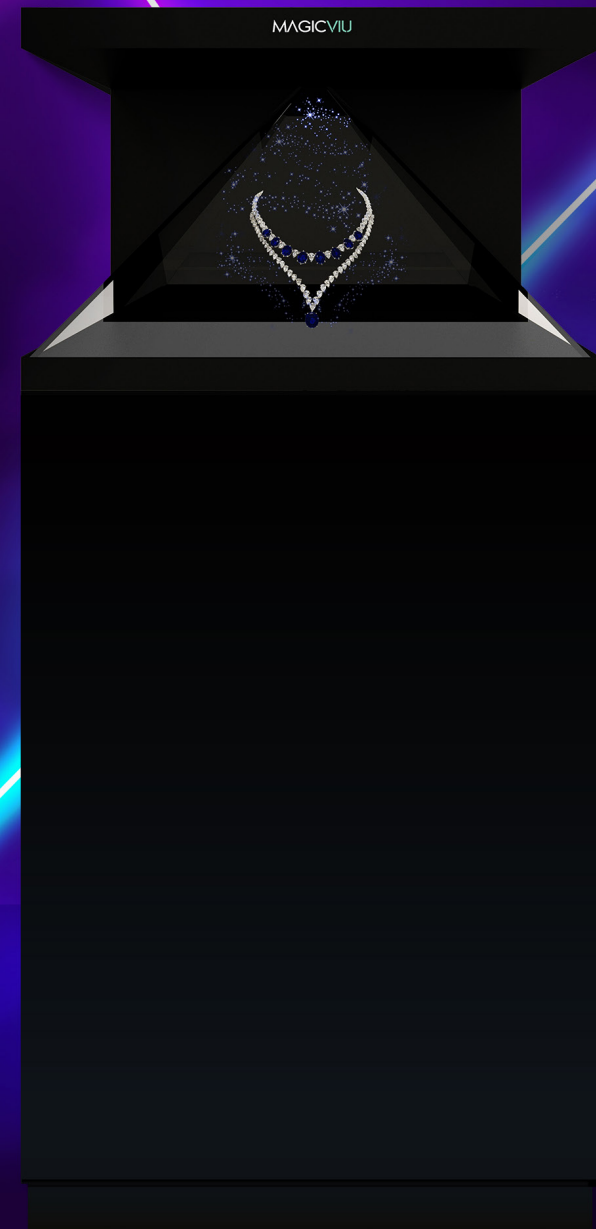
Model	Case Material	Screen Type/Size	Resolution	Overall Size (CM)	Image Size (CM)	Signal Input	Speakers	Remote Control
DEDI-19-180	Metal & tempered glass	LCD/ 350nits 19" Android	1280 x 1024	45 x 44 x 42	40 x 30	USB/HDMI/VGA/SD Default: USB	2 x 2w	Yes
DEDI-22-180	Metal & tempered glass	LCD/350nits 22" Android	1920 x 1080	52,5 x 39 x 39	48 x 30	USB/HDMI/VGA/SD Default: USB	2 x 2w	Yes
DEDI-32-180	Metal & tempered glass	LCD/400nits 32" Android	1920 x 1080	80 X 52 X 56	70 X 39	USB/HDMI/VGA/SD Default: USB	2 x 5w	Yes
DEDI-43-180	Metal & tempered glass	LCD/450nits 43" Android	1920 x 1080	100 x 67,5 x 72	94 x 52	USB/HDMI/VGA/SD Default: USB	2 x 5w	Yes
DEDI-55-180	Metal & tempered glass	LCD/700nits 55" Android	1920 x 1080	130 x 82 x 85	121 x 68	USB/HDMI/VGA/SD Default: USB	2 x 5w	Yes
DEDI-65-180	Metal & tempered glass	LCD/500nits 65" Android	3840 x 2160 (4K)	154 x 98 x 108	143 x 80	USB/HDMI/VGA/SD Default: USB	2 x 10w	Yes
DEDI-75-180	Metal & tempered glass	LCD/500nits 75" Android	3840 x 2160 (4K)	176 x 112 x 110	165 x 93	USB/HDMI/VGA/SD Default: USB	2 x 10w	Yes
DEDI-86-180	Metal & tempered glass	LCD/500nits 86" Android	3840 x 2160 (4K)	197 x 124 x 130	187 x 105	USB/HDMI/VGA/SD Default: USB	2 x 10w	Yes
DEDI-75-C-180	Metal & tempered glass	LCD/500nits 75" Vertical, Android	1920 x 1080	110 x 178 x 198	165 x 92	USB/HDMI/VGA/SD Default: USB	2 x 10w	Yes
DEDI-86-C-180	Metal & tempered glass	LCD/500nits 75" Vertical, Android	3840 x 2160 (4K)	Customized	Customized	USB/HDMI/VGA/SD Default: USB	2 x 10w	Yes
Warranty	12 months from the date of shipping							

(Specifications are subject to changes without prior notice)

270° Showcase

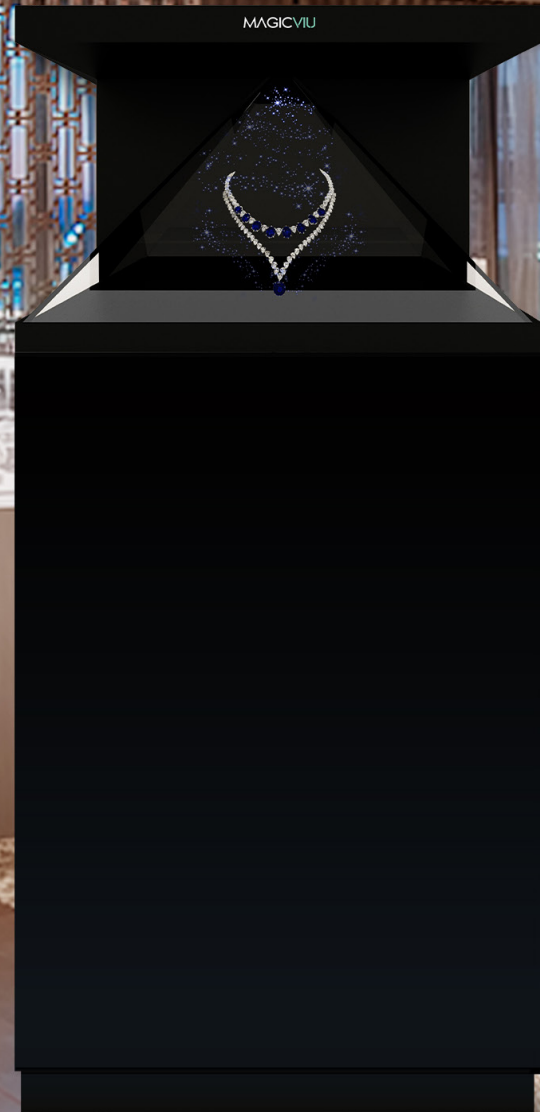
Here is a new technology to catch everyone's eyes! 270° directional display cabinet, viewed from 3 sides & has the features of bright colors, high contrast, high definition, and you can also sense the space and transparency of the 3D image. Through the combination of physical object and image, 270°holographic display cabinet is able to create a three-dimensional image visible to user without 3D glasses.

The 3 sided hologram showcase is highly recommended to use in a dark/low brightness environment for better viewing.



270° Showcase

MAGICVIU



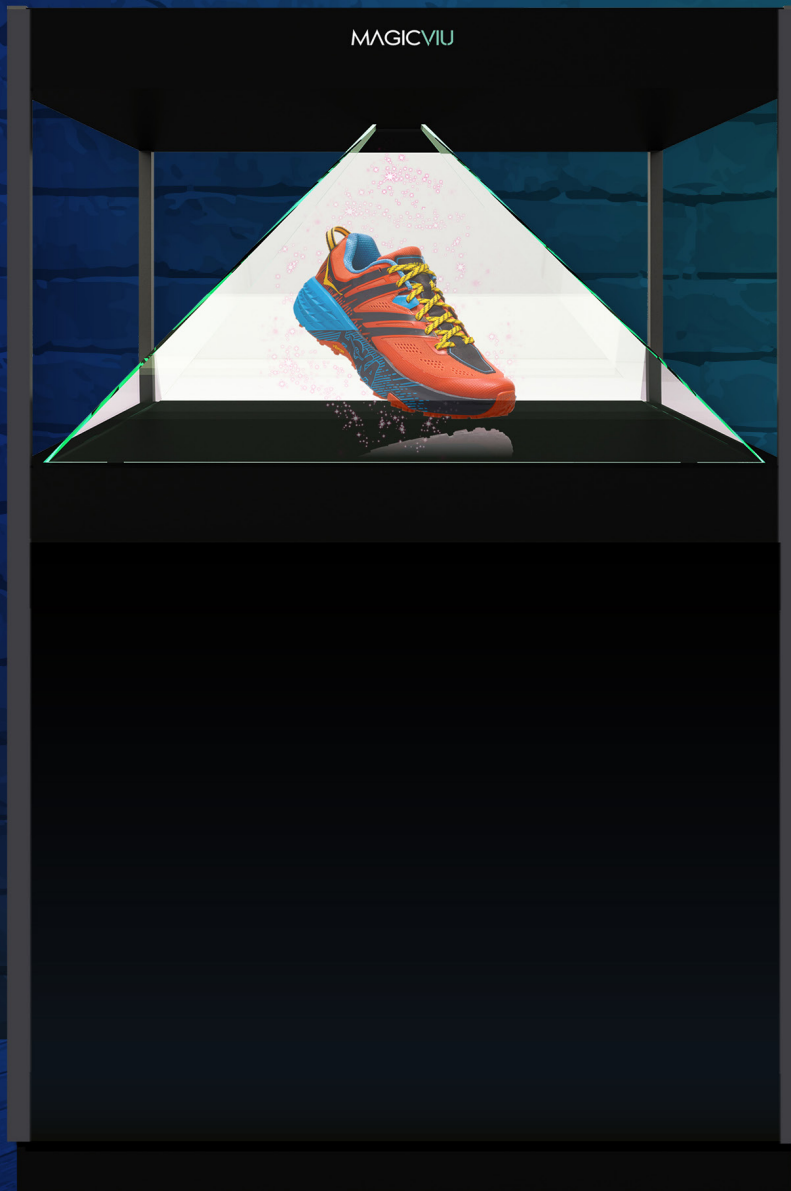
270° Showcases Specification



Model	Case Material	Screen Type/Size	Resolution	Overall Size (CM)	Image Size (CM)	Signal Input	Speakers	Remote Control
DEDI-19-270	Metal & tempered glass	LCD/ 350nits 19" Android	1280 x 1024	41 x 37 x 26 No Stand	12.7 x 12.7	USB/HDMI/VGA/SD Default: USB	2 x 2w	Yes
DEDI-22-270	Metal & tempered glass	LCD/350nits 22" Android	1920 x 1080	53,5 x 38 x 32 No Stand	15.9 x 15.9	USB/HDMI/VGA/SD Default: USB	2 x 2w	Yes
DEDI-32-270	Metal & tempered glass	LCD/400nits 32" Android	1920 x 1080	80 X 52,5 X 42 No Stand	23.3 x 23.3	USB/HDMI/VGA/SD Default: USB	2 x 5w	Yes
DEDI-43-270	Metal & tempered glass	LCD/450nits 43" Android	1920 x 1080	100 x 70 x 60 No Stand	31.4 x 31.4	USB/HDMI/VGA/SD Default: USB	2 x 5w	Yes
DEDI-55-270	Metal & tempered glass	LCD/700nits 55" Android	1920 x 1080	130 x 85 x 70 No Stand	40.3 x 40.3	USB/HDMI/VGA/SD Default: USB	2 x 5w	Yes
DEDI-65-270	Metal & tempered glass	LCD/500nits 65" Android	3840 x 2160 (4K)	154 x 96,5 x 108 No Stand	47.6 x 47.6	USB/HDMI/VGA/SD Default: USB	2 x 5w	Yes
DEDI-75-270	Metal & tempered glass	LCD/500nits 75" Android	3840 x 2160 (4K)	176 x 107 x 110 No Stand	51.5 x 51.3	USB/HDMI/VGA/SD Default: USB	2 x 8w	Yes
DEDI-86-270	Metal & tempered glass	LCD/500nits 86" Android	3840 x 2160 (4K)	197 x 123 x 130 No Stand	62.6 x 62.6	USB/HDMI/VGA/SD Default: USB	2 x 5w	Yes
Warranty	12 months from the date of shipping							

(Specifications are subject to changes without prior notice)

360° Showcase



360° showcase is also known as three-dimensional holographic imaging. This kind of display cabinet is a four-sided, cone made of transparent material, which means that the viewer's sight can penetrate it from either side. Through surface mirroring and reflection, viewers can see floating images and graphics from the conical space. Four video transmitters will emit light signals onto special prisms in the cone, and then the light signals are brought together to form a stereoscopic image with real dimensional space.



360° Showcases Specification



Model	Case Material	Screen Type/Size	Resolution	Overall Size (CM)	Image Size (CM)	Signal Input	Speakers	Remote Control
DEDI-190-360	Metal & normal glass	LCD/350nits 19", Android	1280 x 1024	46 x 46 x 27 No Stand	9.4 x 8.1	USB/HDMI/VGA/SD Default: USB	2 x 2w	Yes
DEDI-1M-360	Metal & tempered glass	LCD/350nits 4 x 18.5", Android	1280 x 1024	100 x 100 x 58 No Stand	40.9 x 23	USB/HDMI/VGA/SD Default: USB	2 x 5w	Yes
DEDI-1.2M-360	Metal & tempered glass	LCD/350nits 4 x 21.5" Android	1920 x 1080	120 x 120 x 68 No Stand	47.6 x 26.8	USB/HDMI/VGA/SD Default: USB	2 x 5w	Yes
DEDI-1.5M-360	Metal & tempered glass	LCD/350nits 4 x 27" Android	1920 x 1080	150 x 150 x 78 No Stand	59.7 x 33.6	USB/HDMI/VGA/SD Default: USB	2 x 5w	Yes
DEDI-2M-360	Metal & tempered glass	LCD/350nits 4 x 32" Android	1920 x 1080	200 x 200 x 102 No Stand	69.7 x 39.2	USB/HDMI/VGA/SD Default: USB	2 x 5w	Yes
Warranty	12 months from the date of shipping							

(Specifications are subject to changes without prior notice)

Options & Accessories

Options

- Customized shape & size
- Interactive showcases (touchscreen or motion detection)
- 3D Content development

Accessories

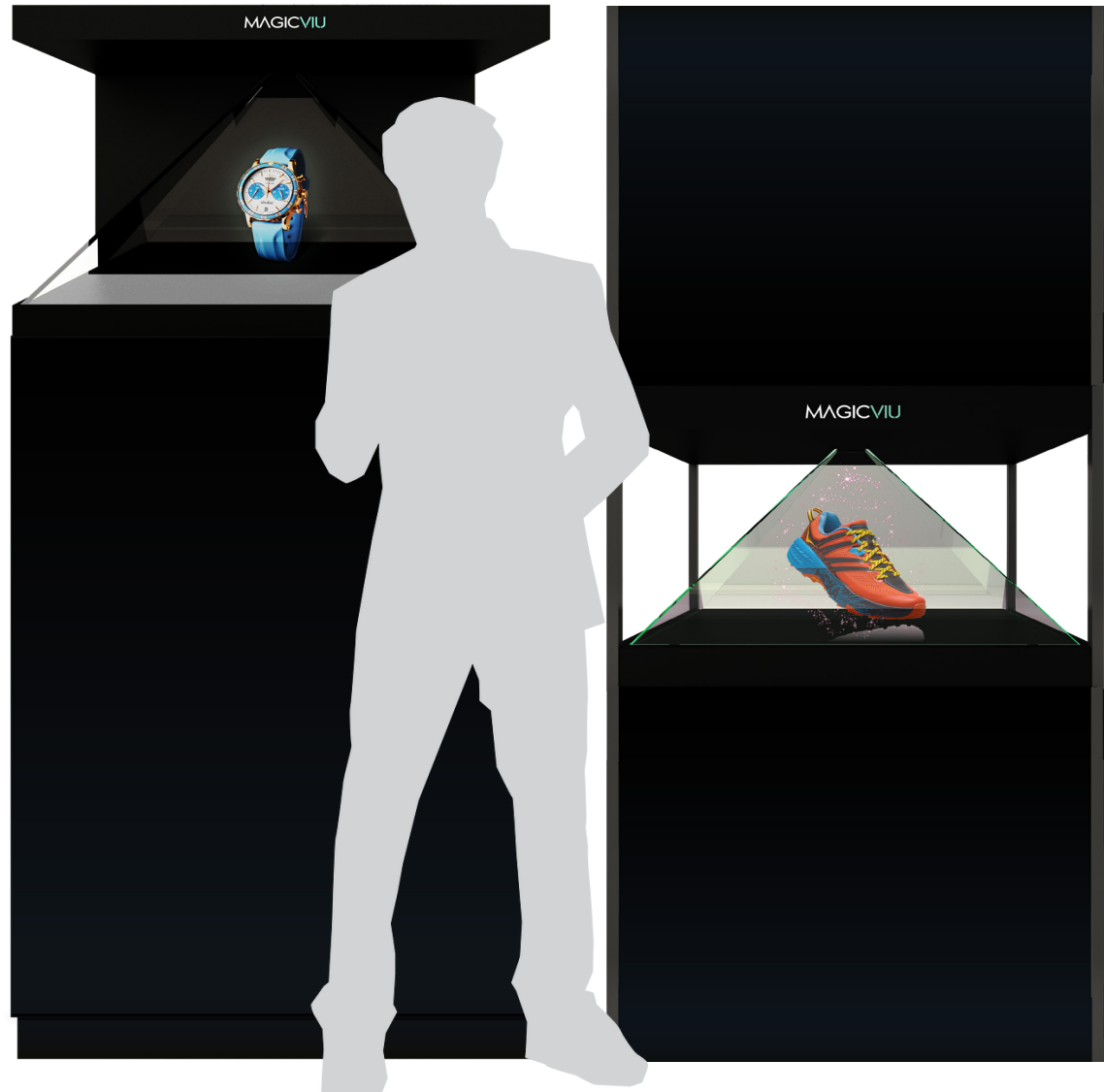
- Showcases up to 32" are supplied with flight case packaging as standard.

3D Content

- We deliver amazing 3D contents for all types of showcases weather it is for architectural 3D models, informative or branding.



Flight Case Packaging



Interactive Options

Customized Shape

MAGICVIU.COM

