

**MAGICVIU**

**TECHNOLOGY  
FOR CORPORATES  
& REAL ESTATE**





**MAGICVIU** designs, engineers & supplies out of the box visual marketing technologies for various industries including corporates & Real Estate, sold through authorized distributors worldwide.

With the increase in competition and the multiplicity of choices for customers, It has become imperative to think of high, modern and unconventional technologies to contribute to presenting your products or services outside the box. **MAGICVIU** has all the technologies, as well as the ability to develop immersive content that will make these events the talk of the hour.

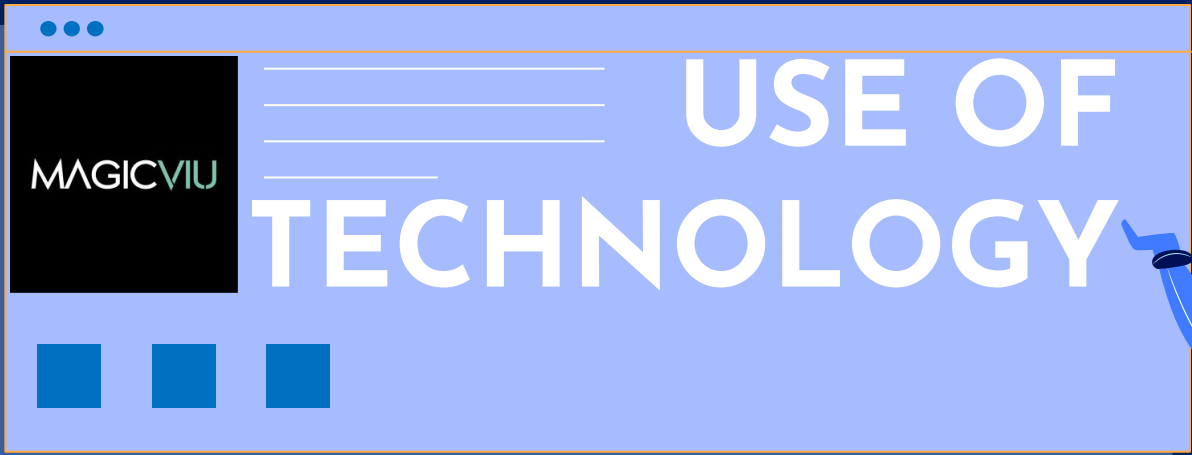


Profile

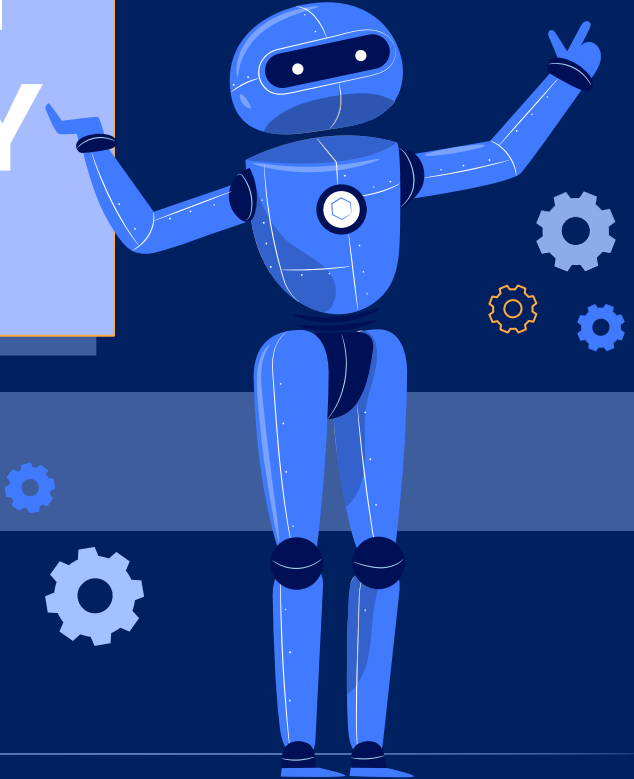
Video

MAGICVIU

# USE OF TECHNOLOGY



- Corporates Building
- Real Estate Presentation
- Innovation Centre
- Events



# PROPOSED TECHNOLOGIES

## 01 Hologram

- On-Stage Hologram
- Hologram showcases
- Water Hologram Screen

## 04 Projection Films

- Rear & Front Projection Film Screens
- Virtual presenter
- E-book
- Virtual Sky

## 02 LCD Signage

- Display Signage
- Interactive touchscreens
- LCD Video wall
- Transparent LCD Screens
- Smart Mirror

## 05 Smart Glass Film

- PDLC Switchable Smart Glass Film

## 03 LED Screens

- Indoor & Outdoor LED Screens
- Transparent Buildings Façade LED Screens

## 06 Projection Mapping

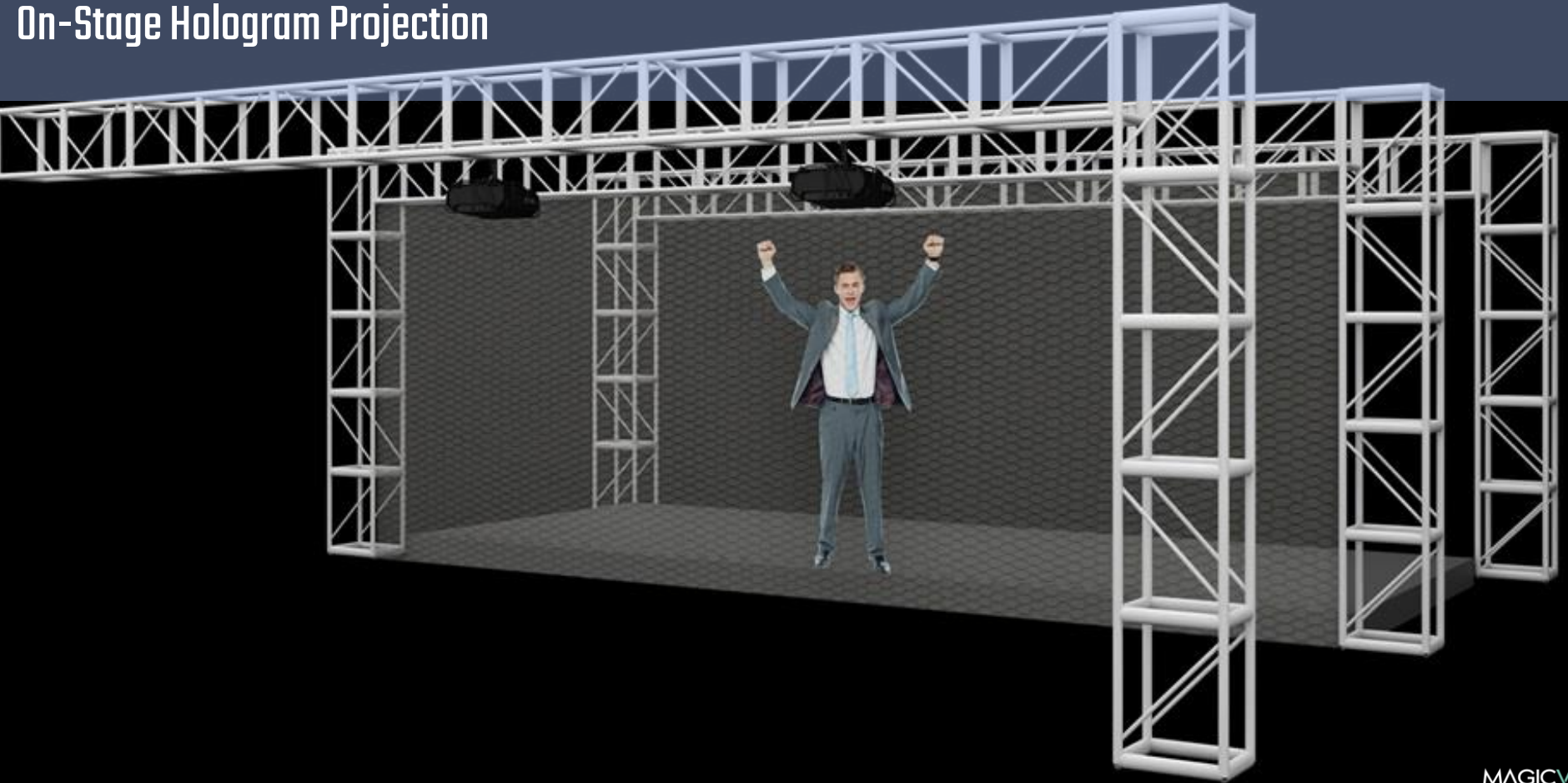
- Projection Artworks
- Architecture 3D Projection Mapping
- Any object 3D Projection Mapping



**01**

# HOLOGRAM DISPLAYS

# On-Stage Hologram Projection



# Large Scale Hologram Projection Gauze

Spectacular 3D hologram projections are created easier than ever using the ultra-lightweight and innovative projection gauze. Highly transparent and extra-wide metallic scrim for large scale 3D hologram effects. Looks so real that 3D objects appear to float in mid-air or surround a performer on stage. Projection gauze is extremely lightweight and foldable and therefore very easy to transport. It's the perfect holographic projection screen material and can be set up in no time.

## 3D Hologram Projection Gauze



For events use



Video



Catalogue

A fashion show stage with models wearing patterned jackets, illuminated by green laser lines that create a 3D illusion. The stage is dark, and the models are lit by spotlights. The green laser lines are projected from the right side of the stage, creating a sense of depth and movement. The models are standing in a line, and the laser lines appear to be flowing around them, creating a 3D effect. The overall atmosphere is futuristic and immersive.

## CREATING THE DIFFERENCE

Your audience will be captivated as the video and graphics float in mid air. They experience the 3D illusion without the need for glasses or headsets.

Our production team creates an immersive content for unforgettable events .



# Hologram Showcases

## Where to use

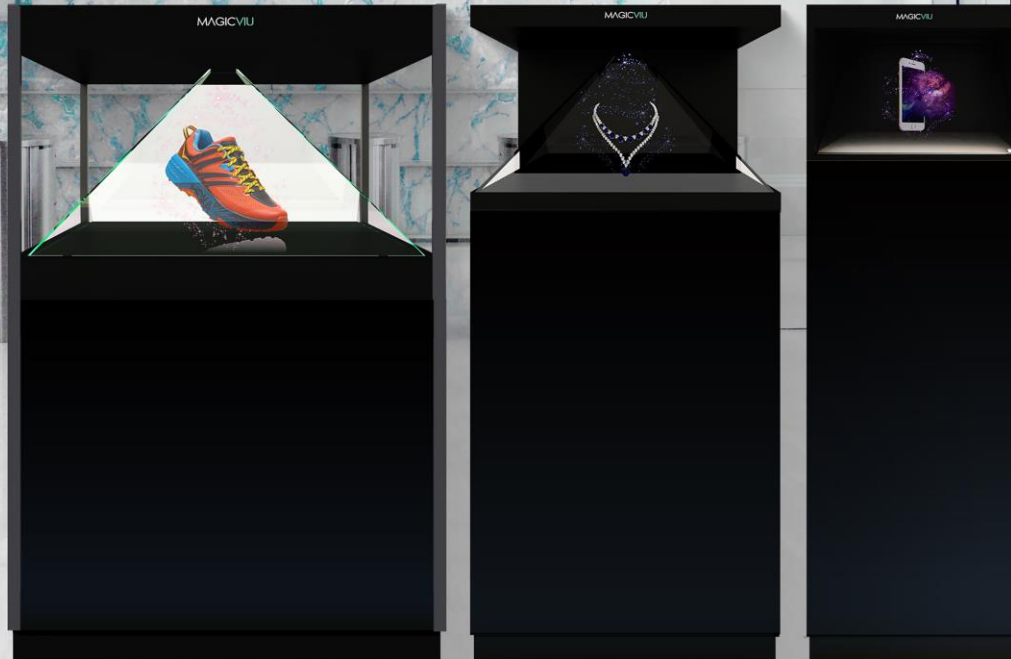
- In house
- Store windows
- Events/Exhibitions
- Real Estate 3D models Display



Catalogue



Video



Designed as portable hologram machines that feature 3D content as if it were floating in air. The holographic display showcase/cabinet is a 3D platform fully integrated that combines the most advanced technologies of processing of image with a modern showcase. This allow focus the attention on the product and show to your costumer in a unique way. There are not only models of hologram, but combination of real output with projections of holograms inside the case. Available in different sizes and different types of number of viewing angle.



Video

# Hologram Showcases

For architectural projects display



# HOLOGRAM WATER PROJECTION SCREEN



## Requirements:

Minimum body of water of 4000m<sup>2</sup> for the best results and viewing.

## Hardware:

- 32K laser projectors
- Water floating pumps and accessories

## Display content:

3D holographic image of 15m x 6m



# HOLOGRAM WATER PROJECTION SCREEN

## A PROJECTION SCREEN MADE OF WATER CAN HELP CREATE INCREDIBLE ILLUSIONS AND EFFECTS.

Water screens can be used for a variety of media including Video, Lighting and Lasers. The water screen's unexpected and instant appearance in the middle of a body of water can both surprise and enchant an audience. Images appear to float in the air and are often described by members of the audience as 'holograms'.

We can deliver custom solutions to suit your requirements; systems could be fixed or floating, land based, in a lake, a pool or the sea.

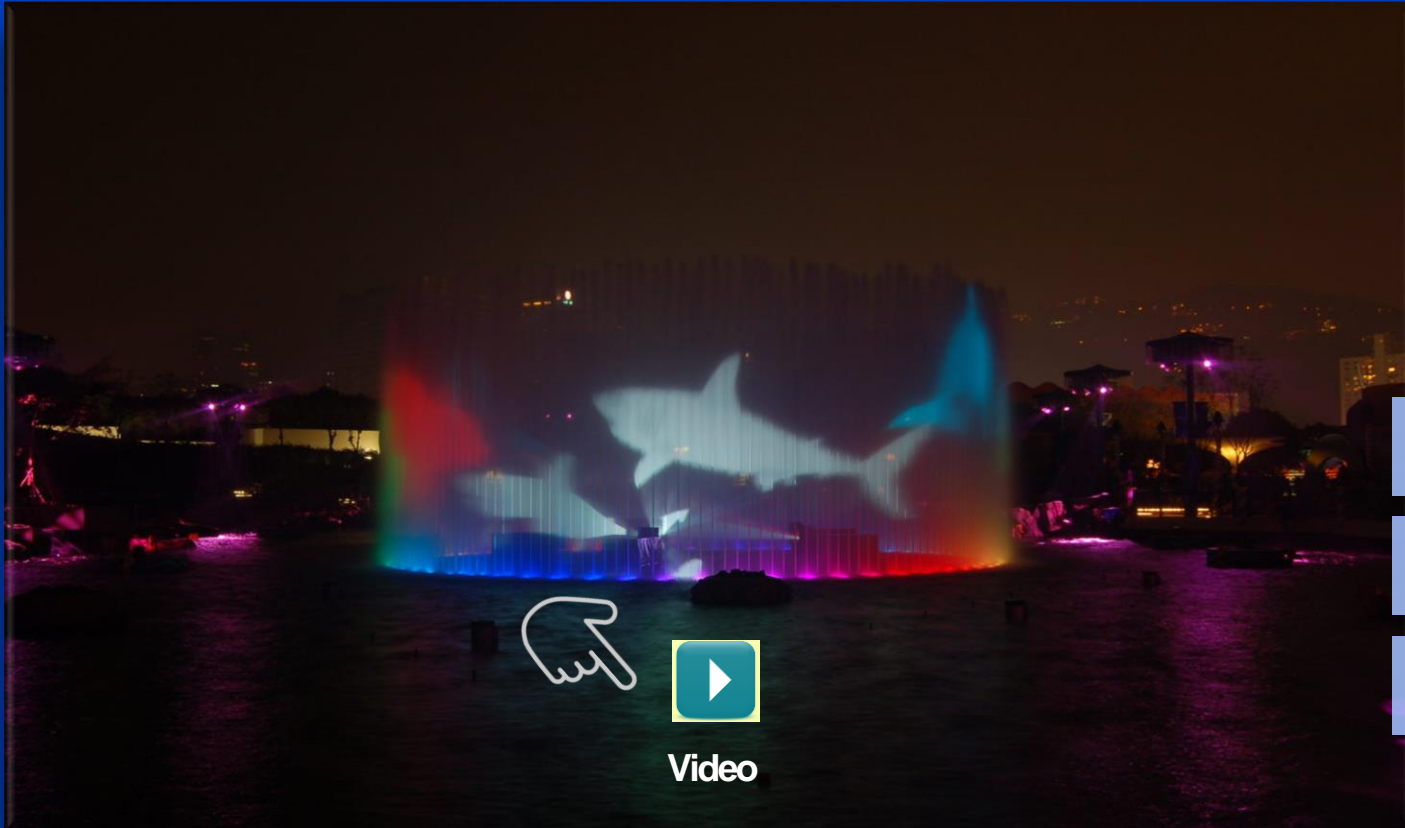
There are different types of water screen available:

**HYDRO SCREEN.** The hydro screen creates a semi circular spray of water suitable for rear projection with lighting, laser and video. The Hydro Water Screen is created by two borehole pumps driving into a single nozzle

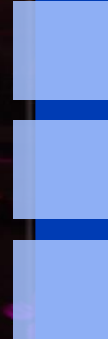
**JET SCREEN.** The unique Jet Screen consists of trident jet screen modules which can be used to create any width of screen. The Jet Screen gives much greater wind stability than a hydro screen, and is suitable for video, lighting and laser projection.



# HOLOGRAM WATER PROJECTION SCREEN



Video



# Hologram Table

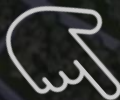
## Innovative Real Este Presentation



MAGICVIU

# NettleBox

HOLOGRAPHIC MAQUETTES  
a new effective way of presenting projects



Video

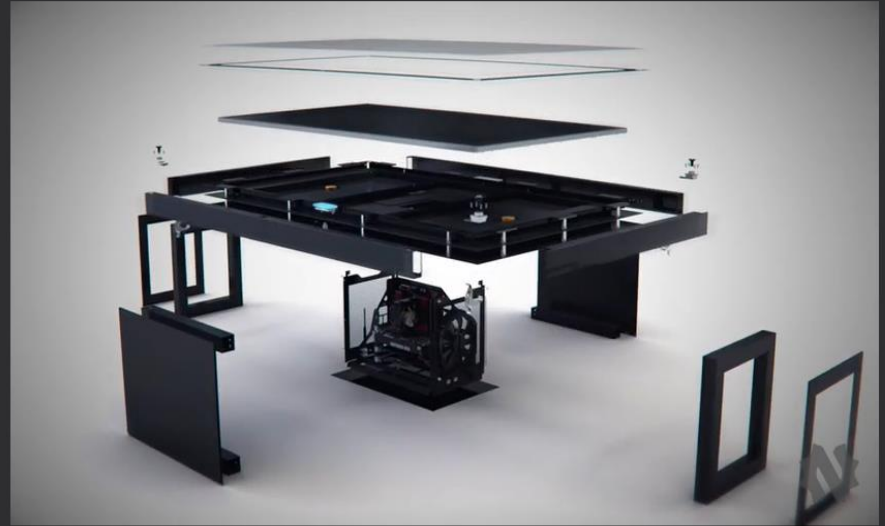
Specifications

## TECHNOLOGY

### Hologram table NettleBox

NettleBox is equipped with 48 or 65 inches LCD panel with Full HD resolution. The holographic models are displayed due to real-time 3D image render and an innovative optical tracking system: 4 cameras with a frequency of up to 1000 fps and active infrared markers. Due to the high-speed response of the tracking system (less than 2 ms) and low position error (less than 2 mm), holograms look like physical objects.

Using the Unity engine in conjunction with the development of our company, allows you to manage the 3D model in real time with no lags and distortions of perspective.







Video



for sale offices



for exhibitions



for events



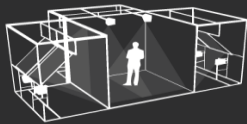
for corporate museums

# NettleBox advantages over other VR / AR tools



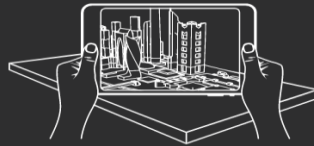
## NETTLEBOX

- maintaining contact with the outside world
- easy installation at the office or event
- unlimited number of scenes
- wide FOV (field of view)



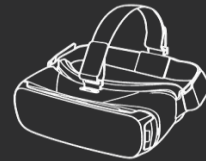
VR CAVE

complicated installation  
small number of scenes  
high price



MOBILE AR

the view is limited by the display of the  
mobile screen and the capacity of the  
device



VR HEADSET

A user is isolated from the  
outside world



AR HEADSET

limited field of view

FEATURES OF NETTLEBOX

# Unleash the power of holographic maquettes

## Showing interiors

With the press of a single button you can take the roof off a model and show interior layouts of houses and industrial buildings, or demonstrate the design of processing or mechanical units





## Animation

Conjure up an animated scenario for the display: people walking by, moving cars, or a manufacturing process in motion

# Scaling

Change the scale of the maquette as you desire: from the scale of a district to a single apartment, from the scale of an industrial site to a section of a single part





## Interactive control

Move around the holographic display, zoom in on interesting parts, and switch between points of view in real time using an iPad, a TouchPad or other controllers



**02**

**LCD SIGNAGE**

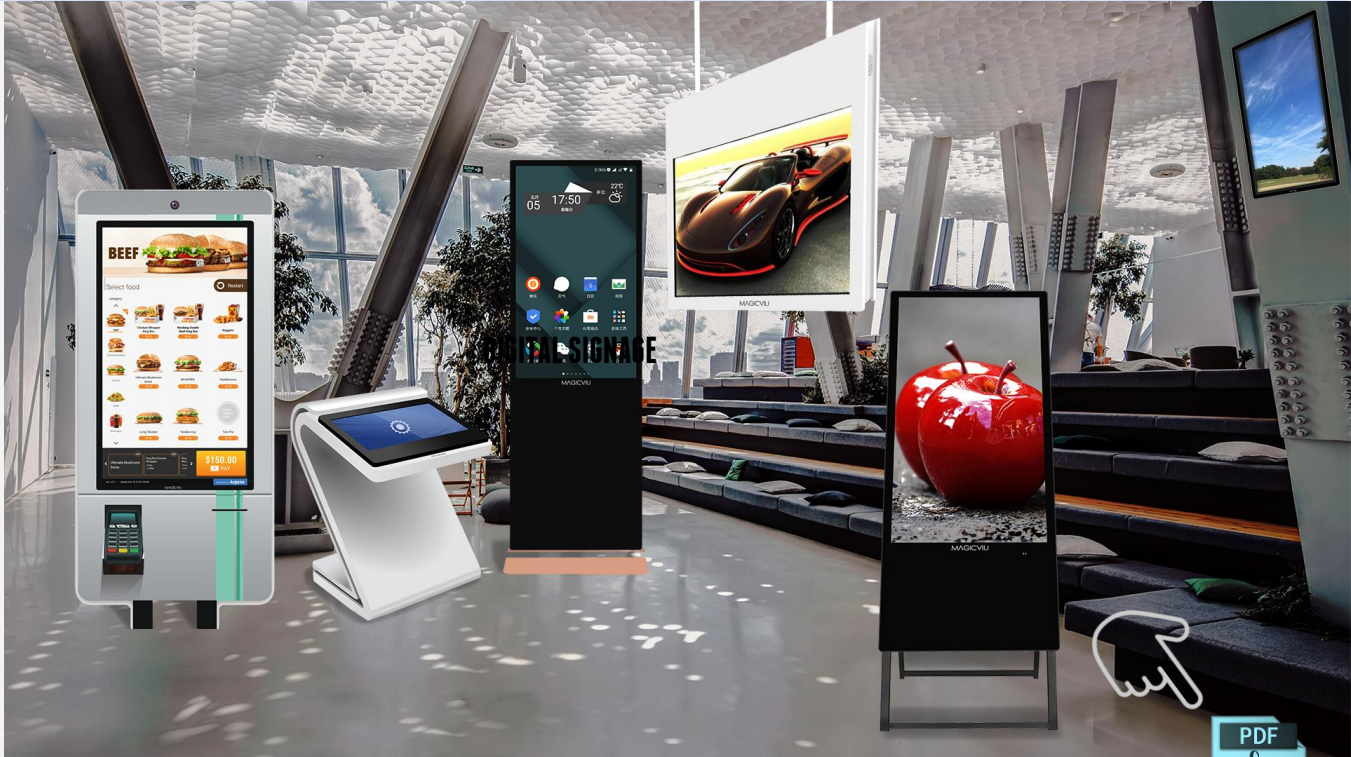
# LCD DIGITAL DISPLAYS & SIGNAGE

# DIGITAL SIGNAGE

is digital video content or digital images displayed on a screen allow incredible flexibility and has the potential to have a powerful impact on your business. In place of traditional print advertisements, menus, posters or signs, the digital images and video that make up the signage (or “digital content”) are displayed on a high-definition screen, or series of screens.

You’ve got a message. Now you just need to get it to the right people. Whether you’re trying to connect with customers, employees, or the general public, we can help you find the perfect way to express yourself.

We offer simple, all-in-one bundles for your basic digital signage needs—from single panel to interactive kiosks to video wall solutions.





Veranstaltungen in  
Rüsselsheim am Main



**MIRJA BOES**  
& Herbie  
Doherty

**FÜR GELD TUN  
WIR ALLES!**  
STAND-UP & GESANG

**HEUTE ABEND** **KULTUR 123**  
20.00 Uhr | Theater Rüsselsheim | Großes Haus

Mehr Veranstaltungshinweise finden Sie unter  
[www.ruesselsheim.de/veranstaltungen](http://www.ruesselsheim.de/veranstaltungen) oder in der Rüsselsheim-App.

MAGICVIU

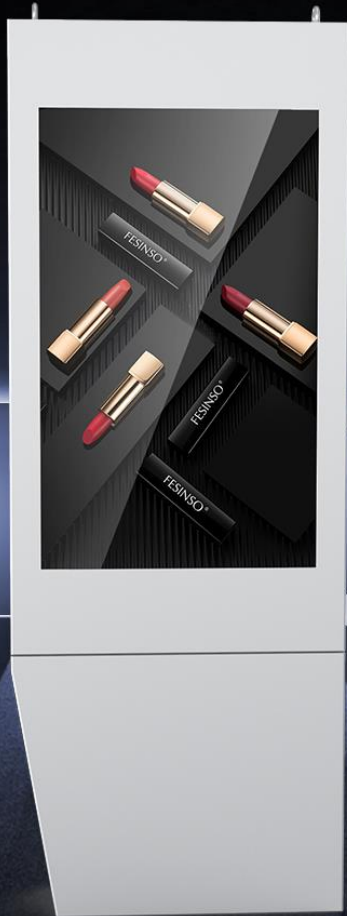
**OUTDOOR SIGNAGE**  
**ENGAGE. INFORM.**  
**SELL MORE.**



# OUTDOOR SIGNAGE

Supply your business with our high-brightness LCD digital displays that work for outdoor applications in the retail, transportation and hospitality industries. Our screens provide you with content that is not hampered by lighting conditions. Approved by the German TUV Laboratory and EMC and ETL certified, our displays maximize customer engagement thanks to their durable structure and versatility.

**MAGICVIU** comes up with integrated solutions to remotely manage and distribute content updates. Find a model custom-fit to engage with your audience [here](#)



# OUTDOOR



Video Catalogue

# Multitouch Solutions

Engage Your Audience



## Hardware & Software

Promultis multitouch solutions, bespoke interactive experience with limitless possibilities. High brightness, durable quality indoor and outdoor products for various business and advertising applications. The Promultis ultimate Suite with over 42 apps including presentation, creativity and productivity tools, as well as games and puzzles. Check our multitouch complete solutions



Video 1



Video 2



Video 3



Catalogue

# Object Recognition Touchscreen

## What is object recognition?



The recognition of objects on large-scale touch screens utilizes the well-known principle of the cashier barcode scanning system and takes it to a new level: objects which are equipped with a special marker chip or printed code can be detected and processed from Multitouch displays in real-time.

The capacitive touch screen is activated by human touch, or in this case, conductive TAGS of **Object Recognition** which serve as an electrical conductor to stimulate the electrostatic field of the touch screen.

The object is recognized when the tags interfere with the electric field projected above the surface. This change in capacitance is detected by the controller which interprets the X and Y coordinates of the event.



Video



Catalogue

# Object Recognition Touchscreen

Innovate your business with Promultis Object Recognition. This unique interactive solution has become increasingly popular in recent years and as such, Promultis has striven to create interactive object recognition solutions like no one else. The hands-on interaction makes for a truly memorable and engaging experience. Not even mentioning the added wow factor and data collection possibilities that Object Recognition can bring to your business!

Promultis Object Recognition allows you to place an object on screen and bring up any information you choose. Our all-new object recognition solution allows you to open information from a tiered menu system that follows the object. We can take this one step further and use the orientation of the object marker on screen to open specific information.



# Affordable LCD Video Wall Solutions for Every Industry



Bring the wow factor to your business and create an experience your customers will never forget. Whether you want tiled displays with multiple screens, large single unit systems or a solution in between, **MAGICVIU** has you covered with everything you need to make a lasting impression. **MAGICVIU** provides super & ultra-narrow bezels 3,5mm, 1,8mm, 0,88mm and 0,00mm bezel on request



Catalogue

# Transparent LCD Displays




Catalogue



Video

 RUGGEDIZED METAL CASE

 SINGLE POWER SUPPLY

 RJ45 ETHERNET CONNECTOR

 USB INPUT

 LOW ENERGY USE

 LOCKABLE BACKDOOR

 SEE-THROUGH SCREEN

 PREMIUM HOUSING

 QUALITY LED LIGHTING

 ADJUSTABLE VOLUME

 SINGLE POWER BUTTON

Catalogue



MAGICVIU

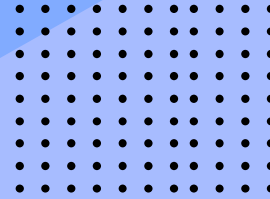
**Transparent LCD Display Cases** offer exciting new ways to engage your audience.

The HD LCD technology combined with a transparent screen substrate opens up creative avenues that have never been an option with traditional LCD screens. Presenting solid black pixels on a transparent background can offer intriguing ways to deliver visual information to your audience, being used to reveal or conceal whatever is behind the screen.

**The uses** for this technology are limited only by your imagination. Retail windows, interactive booths, display cases, interactive games, vending machines, drinks coolers, this list goes on..

**Sizes:** **MAGICVIU** offers transparent box display in dimensions of from 21.5" to 86", giving you great convenience to instantly showcase your star products at diverse occasions like museums, exhibitions, and boutique window decorations with the captivating motion graphics played on the outside screen. **Customized** sizes for special applications can be supplied on request

# LCD Smart Mirror



A Smart Mirror or sometimes called Magic Mirror is a two-way mirror with an inbuilt display behind the glass. The display can show anything you want on the mirror's surface such as the current time, weather forecast, news feed, upcoming appointments, and more.

Smart mirrors can come in different sizes and designs. Smart mirrors are sometimes called 'Magic Mirrors', but they both refer to the same thing.



Catalogue Video



## What Can A Smart Mirror Do?

What makes a Smart Mirror 'smart' is the ability to display any information you want on it. A smart mirror can be customized to display local weather forecasts, news bulletins, your upcoming calendar schedule, social media feeds, etc.

It's possible to even add voice commands using Amazon's Alexa or Google's Home Assistant. With voice commands you can ask your mirror questions, set reminders, or control other smart devices in your home.





11:30

Mon, Nov 03

Conference Room - 11

Floor 5, East Wing



Project Meeting  
11:45 - 12:30

Upcoming

Client Meeting 13:00 - 14:00

Sprint Meeting 14:30 - 15:00



Bengaluru, India

TUE	WED	THU	FRI	SAT	SUN
12°	10°	9°	10°	12°	8°



**03**

**LED SCREENS**



**MAGICVIU** supplies a large variety of LED displays that can help create nearly any size and shape screen your desire. Our LED display systems are seamless, providing clear and detailed imaging. We have a large range of creative solutions ranging from indoor, outdoor, for rental, interactive floor, stadiums, posters and curved LED screen configurations. Our high-resolution products, ability to create customized LED screens help us stand out from the rest. Whether you are looking to increase curb appeal, target impulse buyers or simply attract attention, our LED quality at affordable prices is the answer



Catalogue

Video

# Get noticed day & night with LED screens



## Where to use LED Screens

- Indoor & Outdoor
- Store Windows
- Buildings Glass Façade
- Events & Exhibitions

IN CINEMAS OCTOBER 8 SEE IT IN 4DX 3D & 2D



TICKETS



TICKETS



TICKETS





Video

# Transparent LED Screens



Video Catalogue



Where to use

**In-Store**

**Store's glass window**

**Structure glass façade & Panoramic elevator**

Transparent LED Screen is a type of LED display screen that is clear like a glass (60%-85% transparency) and has functions of an LED. It enables the viewers to see whatever is shown on the glass along with providing a complete coverage of its background as well. Since it enables audience to see what is happening behind the screen, it is also referred to as a see-through screen.

Indoor  
transparent LED  
Screen for  
structure glass  
facade



Indoor  
Transparent LED  
Screen for ceiling



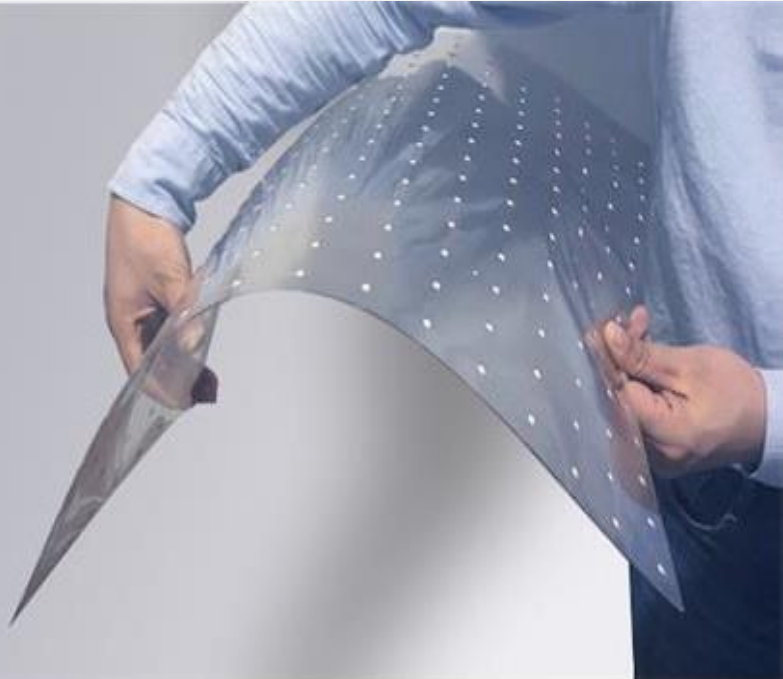




# Revolutionary Technology

## 2mm thickness Transparent

# LED FILM SCREEN



# LED FILM SCREEN



Transparent LED film is a high-end revolutionary self-adhesive thin film easily attached to any glass surface transforming a normal window or building façade into an eye-catching display quickly and with minimum efforts.

The ultra-light-weight and 1,2mm -2mm thickness film requires no complicated construction or structure, flexible and can be deployed on any curved glass or window.

**MAGICVIU** supplies a wide range of transparent self-adhesive LED film from 6,5mm - 60mm pixel pitch with different transparencies ranging from 50%-95% depends on application and desired pixel pitch.

If you have a glass window or façade that is over 60 square meter and want your brand or message brightly noticed day or night, **MAGICVIU** transparent LED film is the perfect solution.

**MAGICVIU**



**04**

**REAR & FRONT  
PROJECTION  
FILMS**



Catalogue Video

## Rear & Front Projection Films

Rear or front projection film is a paper-thin projection surface with integrated application adhesive for installation on glass and acrylic surfaces. All Screen Solutions rear or front projection films are designed to be projected onto with any projector type other technology that may be used as a projection source. One of many advantages of rear projection is that you can stand in front of the screen without blocking the light from the projector and casting a shadow on the screen. This gives more options for stage and room layouts and provides a more professional presentation setup. Rear projection film has a better performance in high ambient light environments than front projection screen

# Self-Adhesive rear projection film

Projector



Rear projection film

Glass

Screen

Indoor

outdoor





Video

## Store's window video screen

Turn any transparent surface (Glass/Acrylic) into giant media screen including your store's window or meeting room using our rear projection film and a rear projector.



Where to use?



Video

Use acrylic panel together with our film and a rear projector and create any portable or ceiling mounted video screen for the store/office or during tradeshows at economical cost.

## Indoor & events Signage/Screens



# MAGICVIU

## MAGICVIU



Our rear projection film contributes in making our virtual presenter that can act like your customers service agent, speaking and delivering messages 24/7 with no mistakes or greeting your visitors up on arrival



Catalogue

MAGICVIU



# Purely Projection

## Real sky at real time



Using ultra short projection technology we are able to fit the screen into a very low ceiling void with only 450mm between the screen and the slab above.

The projection is extremely lifelike, we can also add a 4K camera mounted on the roof of the building to show the sky outside in real time as well as 4K media player content, we can go too far and add IP cameras in other areas of Saudi Arabia and show the sky from other locations on the skylight.

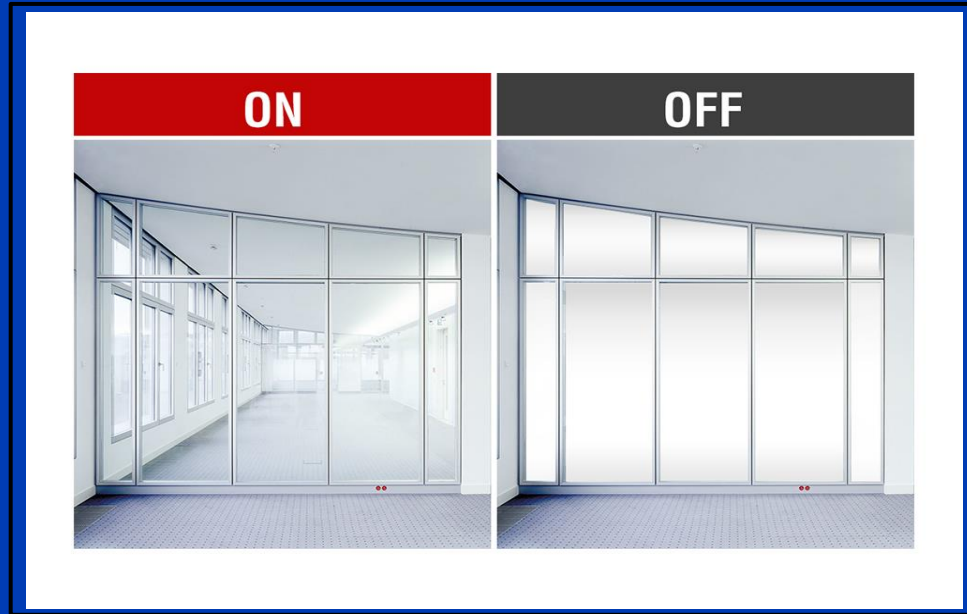
The benefits of projection is that pricing is cheaper than led and the image quality is very good. Also the mounting is simpler. With LED laser light sources you can now install projection without worrying about lamps or filters needing to be changed.



**05**

**PDLC  
SWITCHABLE  
SMART GLASS  
FILM**

# Upgrade your privacy standard



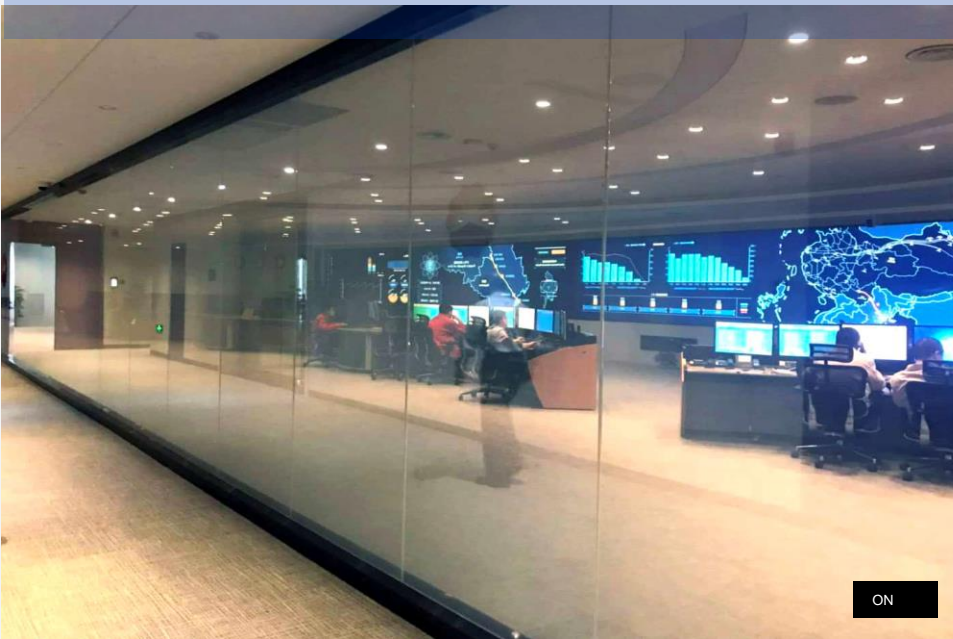
## Smart Glass Film

**Polymer Dispersed Liquid Crystal (PDLC)** switchable smart glass film consists of micron sized droplets of liquid crystal dispersed in an optically isotropic polymer matrix. By choosing appropriate combinations of liquid crystal and polymer material, the PDLC film can be electrically switched from a light-scattering or opaque “off state” to a non-scattering or transparent “on state”. In the “off state”, the PDLC film appears milky white due to the refractive index mismatch encountered by incoming light at the liquid crystal/polymer interface.



Catalogue Video

# Smart Glass Film for Office Partitions



Although contemporary work spaces exude flexibility and space, a business and its workers still require privacy. From private meetings, sensitive one-on-ones with HR, and a quiet spot to sit down and think without feeling as if you are in a fishbowl, privacy isn't a luxury it is more of a necessity. In today's modern world, there are just a few luxuries more valuable than quiet time, Quiet zones are essential to maximizing output and productivity. This highly innovative smart glass film provides users the capability to produce immediate privacy on demand. Switchable films, allow glass office walls to switch from transparent to opaque in an instant, encouraging both privacy and light-filled atmosphere.

The switchable glass can be controlled using a switch or wireless remote controller, for privacy at the touch of a button. Through the use of a tiny electrical current, users can quickly transform glass walls from transparent to opaque and back. Smart Glass enhances the appearance and feel of a room, raises productivity while enabling both privacy and an open work environment.

## 3D Projection mapping

By projecting beautiful imagery over complex architecture and surfaces we create immersive content for advertising, sponsorship, national day celebrations, and other special events, as well as in permanent tourism attractions. We work with reliable projectors leasing companies in different countries to provide our customers with a full package service.



Video



**Time to go**

**Hi-Tech**

**With**

**MAGICVIU**

**Technology**

# MAGICVIU

Hologram Displays    LCD & LED Displays    Projection & Smart Films  
Interactive Surfaces    Virtual & Augmented Reality    Projection Mapping