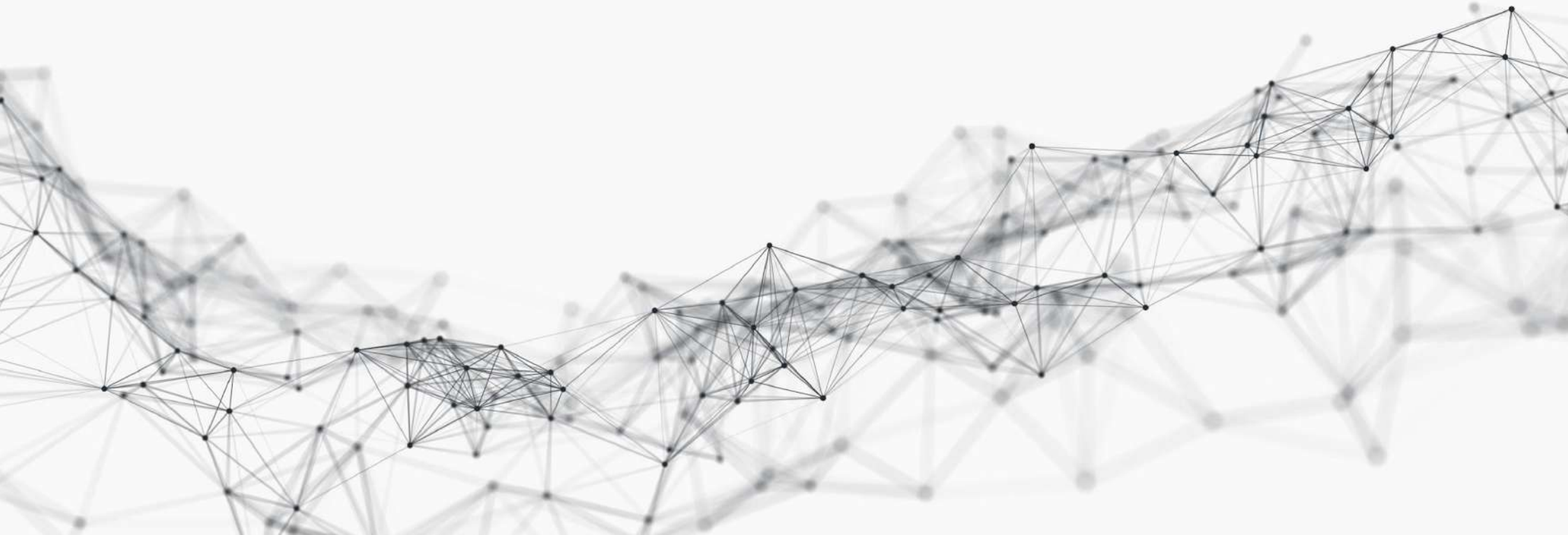


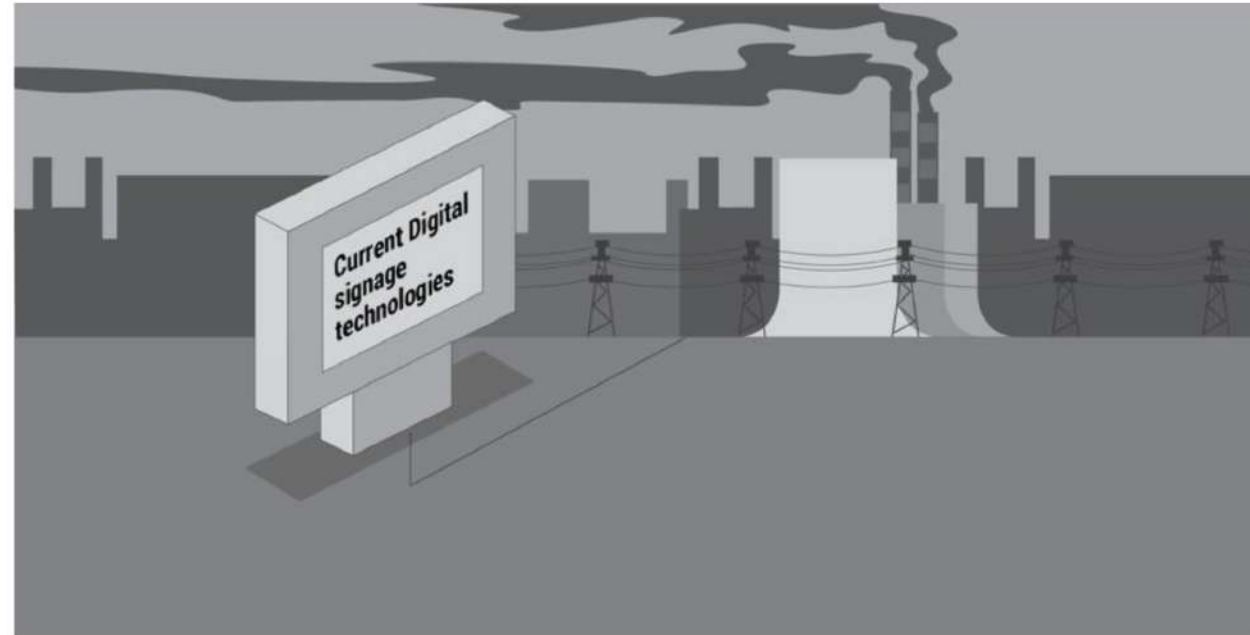
# VISIONECT

YESTERDAY, TODAY, TOMORROW



# Problem

LCD/LED digital signage systems are power hungry, complex and expensive to install and demanding to manage



# What?

An ultra-low power digital signage platform that is 99% more power efficient than LCD or LED.

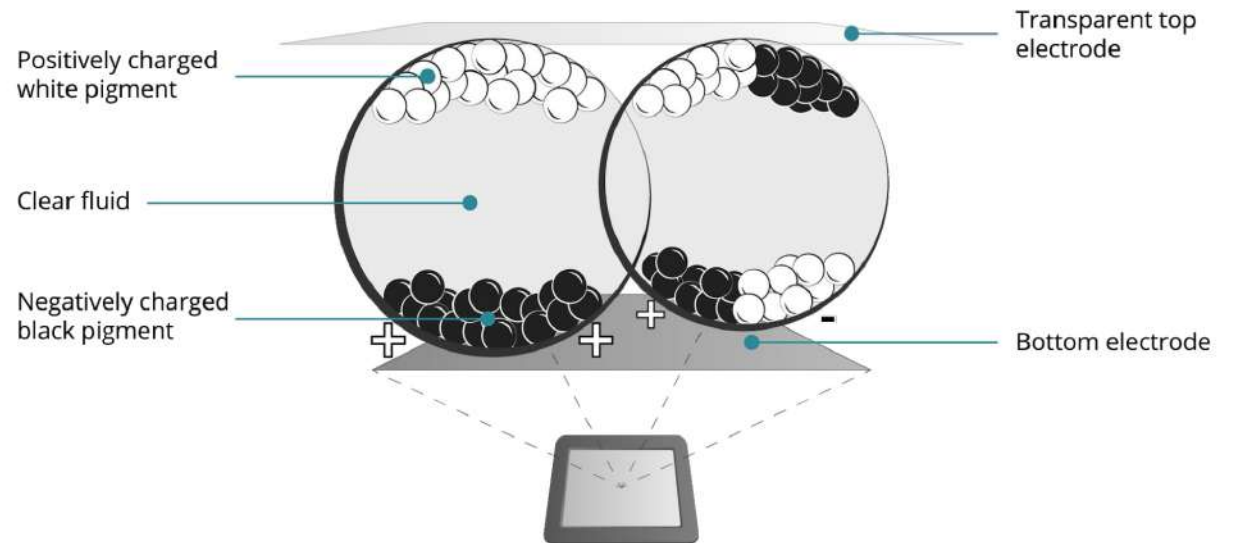




# E-Paper

## How it works

- ❑ E-Paper is made up of millions of tiny microcapsules
- ❑ Each microcapsule contains electrically charged particles in black and white
- ❑ When electric field is applied, corresponding particles move
- ❑ When de-powered, the image remains





# E-paper Signage

- Extremely power efficient
- Solar or battery powered
- Low installation costs
- Good visibility in direct sunlight
- Cool silent design
- Green and sustainable technology
- No light pollution
- Effortless connectivity  
*Wi-Fi, 3G/4G, Ethernet*
- Relevant information signage
- Able to run 24/7

place  
&play

VISIONECT

## Welcome to the future of signage.

Keeping things simple can often turn out to be the most complex task. At Visionect, we believe that digital signage shouldn't be that complicated. From installation to integration and content management, our products are created to fit, seamlessly and without hassle. Sustainable and green, Visionect technology is unparalleled when it comes to low energy consumption and display visibility. In delivering this accessibility, everything boils down to one simple truth: nothing beats experience. And when it comes to experience, nothing beats Visionect.



**Matej Zalar**  
CEO of Visionect







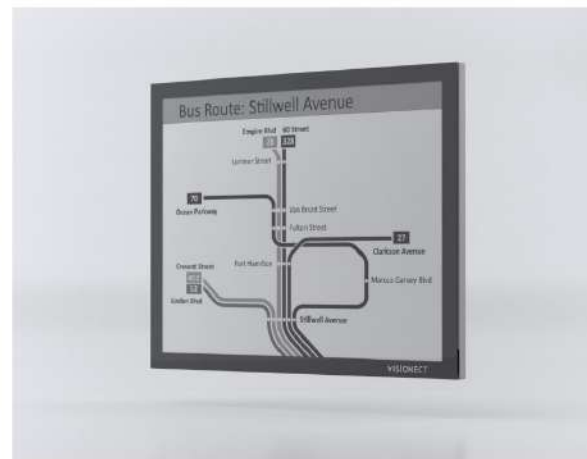
The greenest digital sign.  
A cable-free electronic paper display  
with full CMS integration and up  
to a year of battery autonomy



Bank of Ireland  
Exchange rates - ECB reference rates

Date: 08.03.2019

Country	Currency	Unit	Rate
United States	US DOLLAR	USD	0.843
Japan	YEN	JPY	126.72
Bulgaria	BULGARIAN LEV	BGN	1.9568
Czech Republic	CZECH KORUNA	CZK	20.364
Denmark	DANISH KRONA	DKK	7.4603
United Kingdom	POUND STERLING	GBP	0.75556
Hungary	FORINT	HUF	311.56
Poland	ZLOTY	PLN	4.1002
Switzerland	SWISS FRANC	CHF	1.1254
Sweden	SWEDISH KRONA	SEK	10.2118
Iceland	ICELANDIC KRONA	ISK	134.36



# Place & Play

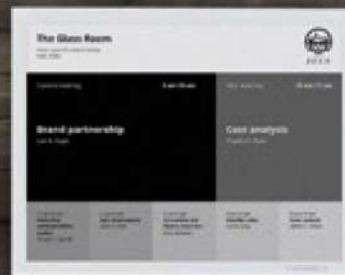
Just place and play

No cables, no installation, no pollution, no worries.

- ❑ Simple, beautiful & versatile
- ❑ Power-Efficient and cost-saving
- ❑ All-in-one signage system

## Introducing Place & Play.

Meet the Place & Play signage family. Effortless to use, with not a wire in sight. The only all-in-one digital signage device combining mount, display and player. Up to 12 months of battery autonomy. Support for all content management systems. It's as easy to use as the name suggests.



## The future. Elegant and green.

A 13-inch electronic paper display, 99% more energy efficient than comparable solutions. Enclosed in a precision-brushed aluminum casing, enforced with the most durable glass pane ever created to protect from scratching and hazing. Sustainability meets design.

Available in Graphite Black and Slate Gray.



## No Installation Chaos.

### NO POWER CABLES

Up to 12 months battery life (13") with a single charge

### EASILY MOUNTED

Magnetic mounting kit (13"), mount on glass, concrete, or wood

### WIRELESS

Support Wi-Fi



Time Hora	Destinació Destination	Vol Flight	Aeronau Aircraft	Embarcament Boarding	Porta Gate
14:20	MUNICH	JKK 8845	66/71	13:54	3
14:20	PRAGA	TVS 059	34/35	14:01	5
14:25	HAMBURGO	DLH 4487	67/71	13:55	3
14:25	HAMBURGO	JKK 9383	67/71	13:55	3
14:30	MADRID	JKK 423	57/65	14:00	2
14:30	BIRMINGHAM	BAW 1797	03/07	14:10	4
14:30	BIRMINGHAM	IBE 7591	03/07	14:10	4
14:40	MADRID	IBE 2609	09/23	14:20	2
14:45	SEVILLA	IBE 1134	09/23	14:25	1

**SIZE (H/W/D)**

230 × 297 × 10.5 mm  
(9.05 × 11.40 × 0.39 in).

**CONNECTIVITY**

2.4 GHz Wi-Fi (IEEE 802.11 b/g/n) standard,  
WPA2-PSK, WPA2-EAP support.

**DISPLAY**

E Ink® Carta electronic paper display. 16-level grayscale, 750 ms (4 bit full screen) / 100 ms (1 bit partial) refresh rate. A 13-inch screen with a 4:3 diagonal. Resolution of 1600 × 1200 px. Reflective electrophoretic technology with a 180° viewing angle.

**BATTERY**

High performance rechargeable  
Lithium-Polymer 10,000 mAh battery.  
Up to 12 months of autonomy on  
a single battery charge.

**ENCLOSURE**

High quality anodized aluminum casing.  
Anti-reflective, high transmissive glass.

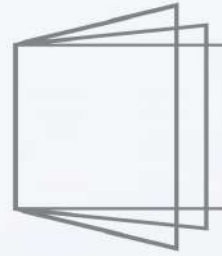
**MOUNTING**

Built-in Magnetic Mount. 100 × 100 mm  
(3.94 × 3.94 in) VESA mount compliant.





**All-In-One**  
An all-in-one signage system.  
Display, player and mount. And  
not a wire in sight.



**Place & Play**  
Completely cord-free, for  
effortless indoor installation.



**Green**  
99% more power efficient than  
LCD or LED. Up to 12 months of  
battery autonomy.



**CMS**  
Supports all major content  
management systems. Easily  
display any web link.



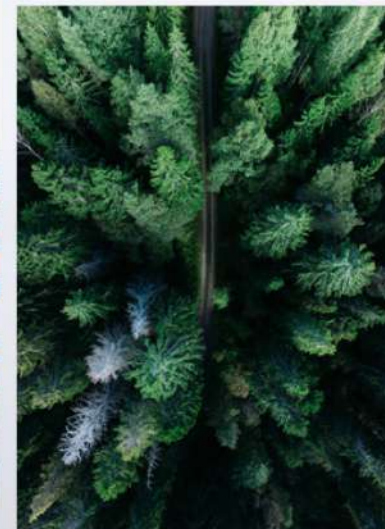
**Superb Design**  
Meticulously built for  
a seamless look and feel.



**Paperlike**  
No glare, no light pollution.  
The feel of ink on paper.

# Your message. As simple as place & play.

Any industry, anywhere. Airports, hotels, offices, restaurants, banks, museums, shops, hospitals, schools. Intuitive setup. No wires, no installation. Works straight out of the box. Getting your message across is a simple matter of place & play.





VISIONECT

## Applications.



Think how convenient it is for a passenger at the airport or train / metro station to be able to check his trip information while in the restrooms or coffee shop, restaurant & shopping areas without incurring the hassle and trying to find the information board every time.



Use the place and play to guide students and professors in the university with details of the use of the lecture hall, such as lecture times, section number, lecture materials, the name of the professor, or direct visitors to offices whose use changes from time to time.

Now hospitals can provide easily viewing information for their employees and doctors about the schedule of daily surgeries or endoscopes, including the times of the operation or procedure, the name of the doctor, the name of the patient, and any other information that the concerned person needs to see, place and play can also be used to display any important information that is constantly changing.



Provide a better service for your hotel guests, display the airport shuttle information, hotel event details and locations & special offers, use the Place & Play in the reception area and other areas of the hotel to facilitate guest access to such information.



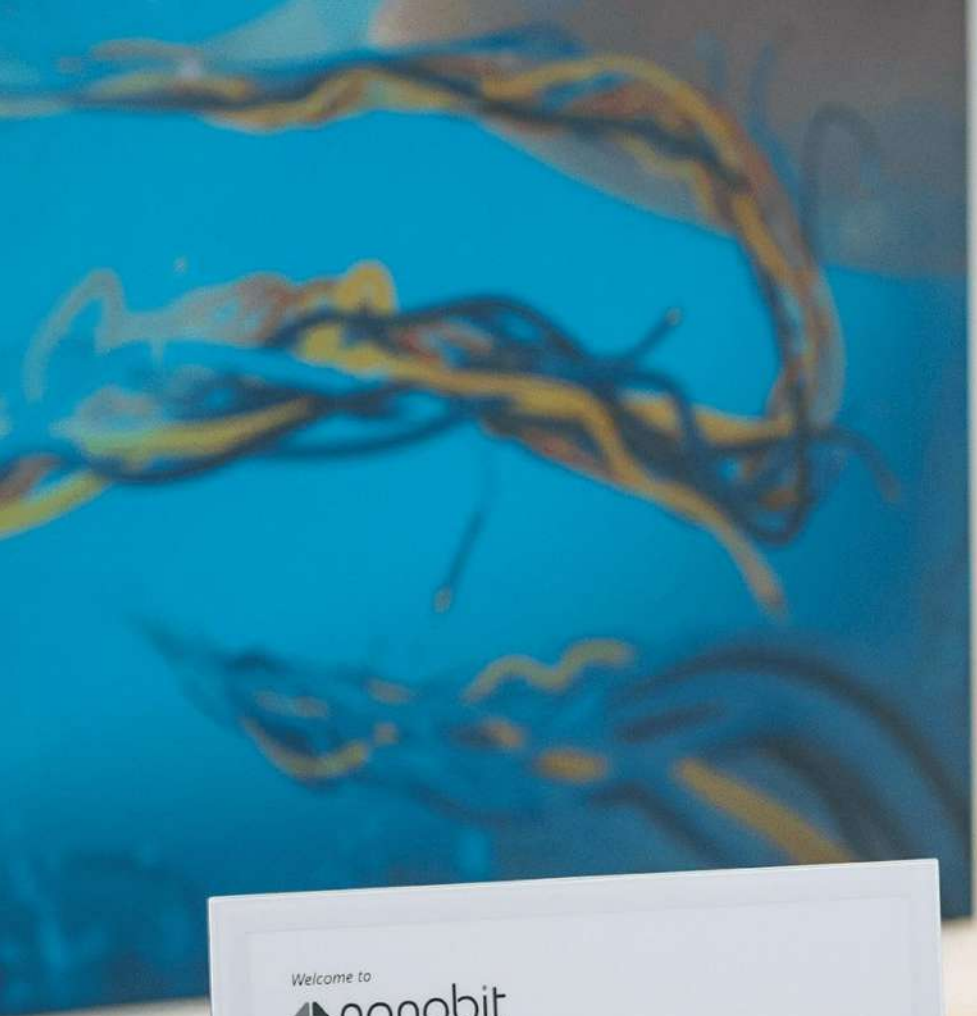
Contribute to helping your tenants in the shopping center/mall and work to entice them by showing their specials to shoppers & use place & play to display their special offers, discounts and the store location.



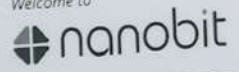
Make your exhibition more organized, use Place & Play to display the names of exhibitors, their pavilions number and their products, and provide better service to your customers.



Make the schedule of sports activities matches available in all stadiums and arenas. Dates, details and venue of the match in more than one language displayed all over the building and the dressing rooms.



Welcome to



Marketing  
Sales  
Accounting

Room 228  
Room 229  
Room 231



Development

Room 307

VISIONECT



## Train Departures Wien Hbf

Departure	Estimated	Line	
13:30	ON TIME	<i>railjet</i>	566
13:39	DELAYED	<i>railjet</i>	63
13:42	ON TIME	<i>railjet</i>	863

13:58	ON TIME	<i>railjet</i>	657
14:10	DELAYED	<i>EC</i>	102
14:12	ON TIME	<i>railjet</i>	643
14:25	DELAYED	<i>railjet</i>	539
14:30	ON TIME	<i>railjet</i>	64
14:30	ON TIME	<i>railjet</i>	864
14:39	ON TIME	<i>EC</i>	145

Direction	Track
BREGENZ	8
BUDAPEST-KELETI	9C-E
FLUGHAFEN WIEN	9A-C

GRAZ HBF	7A-C
WARZAWA WSCHODNIA	9C-E
FLUGHAFEN WIEN	10A-C
VILLACH HBF	7A-C
MÜNCHEN HBF	8
BREGENZ	8
BUDAPEST-KELETI	10A-C

↑ K-12 TEACHING &  
LEARNING

← BUSINESS SERVICES

← PAYROLL

← HUMAN RESOURCES

→ BOARD ROOM

↑ RESTROOMS





INTERCONTINENTAL  
LJUBLJANA

Ljubljana  
Thursday  
Sunny

● 30°C

Precipitation: 10%  
Humidity: 52%  
Wind: 13 km/h



Thu	Fri	Sat	Sun	Mon	Tue	Wed
●	●	☁	●	☁	●	☁
30° 14"	31° 14"	32° 16"	33° 16"	31° 16"	29° 16"	31° 15"



Sortides  
Departures  
Salidas

Terminal 2  
BARCELONA AIRPORT  
EL PRAT

Hora Time Hora	Destinació Destination Destino	Vol Flight Vuelo	Mostrador Counter Mostrador	Embarcam Boarding Embarque	Porto Gate Puerto
14:20	MUNICH	JKK 8845	66/71	13:54	3
14:20	PRAGA	TVS 059	34/35	14:01	5
14:25	HAMBURGO	DLH 4487	67/71	13:55	3
14:25	HAMBURGO	JKK 9383	67/71	13:55	3
14:30	MADRID	JKK 423	57/65	14:00	2
14:30	BIRMINGHAM	BAW 1797	03/07	14:10	4
14:30	BIRMINGHAM	IBE 7591	03/07	14:10	4
14:40	MADRID	IBE 2609	09/23	14:20	2
14:45	SEVILLA	IBE 1134	09/23	14:25	1



place  
& play

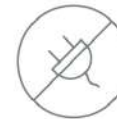
## Place & Play 13" and 32"

*No cables, no installation, no pollution, no worries.  
Just place and play.*

Place & Play is a brand new line of electronic paper displays with a cloud-based content and management service from Visionect, the world's premier designer and developer of B2B electronic paper solutions.

Deployed without any wires or cable-laying installation, Place & Play displays are 99% more power-efficient than LCD, running for up to 12 months on a single battery charge thanks to a decade of optimization, saving thousands in energy bills.

Place & Play can be installed anywhere in minutes, either with the provided Magnetic Mount or with a VESA mount. An all-in-one device, Place & Play supports all web based major content management systems and is ready to use straight out of the box.



### SIMPLE

Completely cable-free.  
Installs in minutes anywhere  
and by anyone.



### POWER-EFFICIENT

Up to 12 months of  
battery autonomy.  
Place, play and forget.



### VERSATILE

Supports all major content  
management systems.  
Displays any web page.



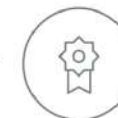
### COST-SAVING

99% more power efficient  
than LCD displays. Saves  
thousands in energy bills.



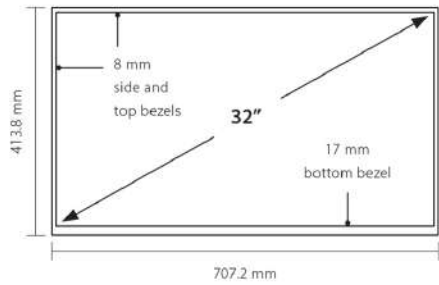
### ALL-IN-ONE

An all-in-one signage system.  
Display, player and mount.  
And not a wire in sight.



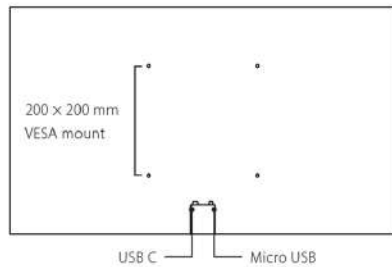
### BEAUTIFUL

Designed and meticulously  
built in Europe for a  
seamless look and feel.



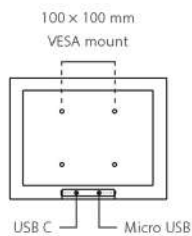
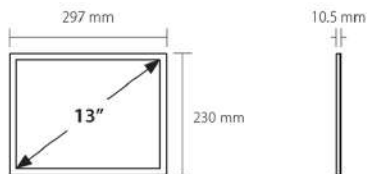
### 32" DISPLAY

- 31.2-inch (16:9 diagonal) E Ink® electronic paper screen
- High visibility and contrast
- 180° viewing angle
- Resolution: 2560 × 1440px
- Active Area (H/W): 27.21 × 15.31 in. (691.2 × 388.8 mm)
- Pixel Pitch (H/W): 0.01 × 0.01 in. (0.27 × 0.27 mm). Equivalent to 94 ppi.
- Pixel Configuration: Square
- 16 level grayscale
- Refresh rate: 750 ms (4 bit full screen) / 100 ms (1 bit partial)



### 13" DISPLAY

- 13.3-inch (4:3 diagonal) E Ink® Carta electronic paper screen
- High visibility and contrast
- 180° viewing angle
- Resolution: 1600 × 1200 pixels
- Active Area (H/W): 10.64 × 7.98 in. (270.4 × 202.8 mm)
- Pixel Pitch: (H/W) 0.006 × 0.006 in. (0.169 × 0.169 mm). Equivalent to 150 ppi.
- Pixel Configuration: Rectangle
- 16 level grayscale
- Refresh rate: 750 ms (4 bit full screen) / 100 ms (1 bit partial)



### CONNECTIVITY

- 2.4 GHz Wi-Fi (IEEE 802.11 b/g/n) standard, WPA2-PSK, WPA2-EAP support

### POWER

- Patented ultra low energy architecture, only 1% of the power used by LCD.
- High performance rechargeable Lithium-Polymer 10,000mAh battery. Up to 12 months of autonomy on a single battery charge.
- Enclosed Micro USB charging cable
- Cordless functionality

### CASING

- High quality anodized aluminum casing.
- Anti-reflective, high transmissive glass.
- Color: Black, Gray

### MOUNTING

- Place & Play 13°:  
attachable to any surface with a self-adhesive Magnetic Mount that requires no tools. One included with each device, Additional Magnetic Mount available for purchase.
- Place & Play 13° and 32°:  
VESA mount compliant

VISIONECT

Powered by Visionect.

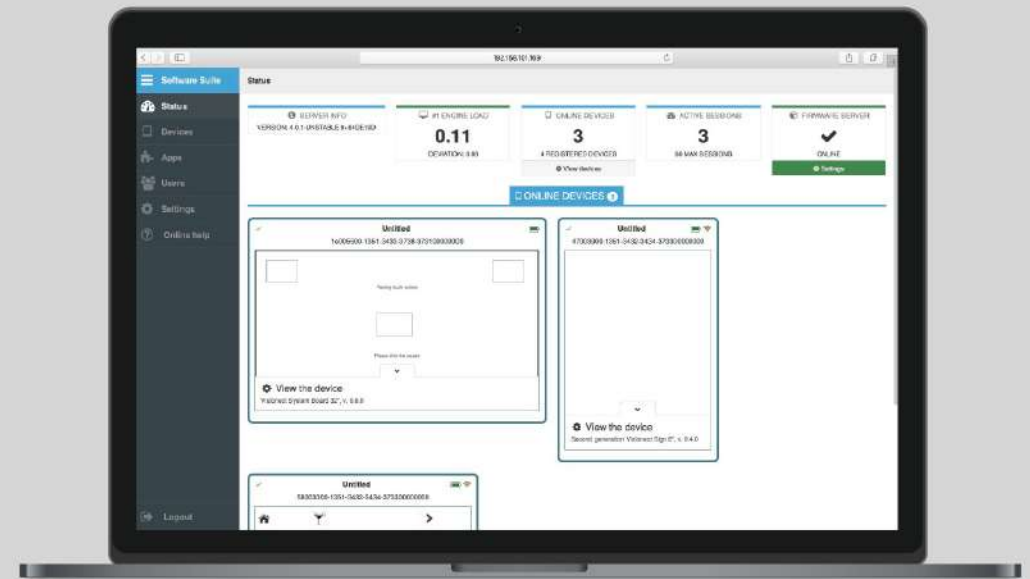
Technology partners





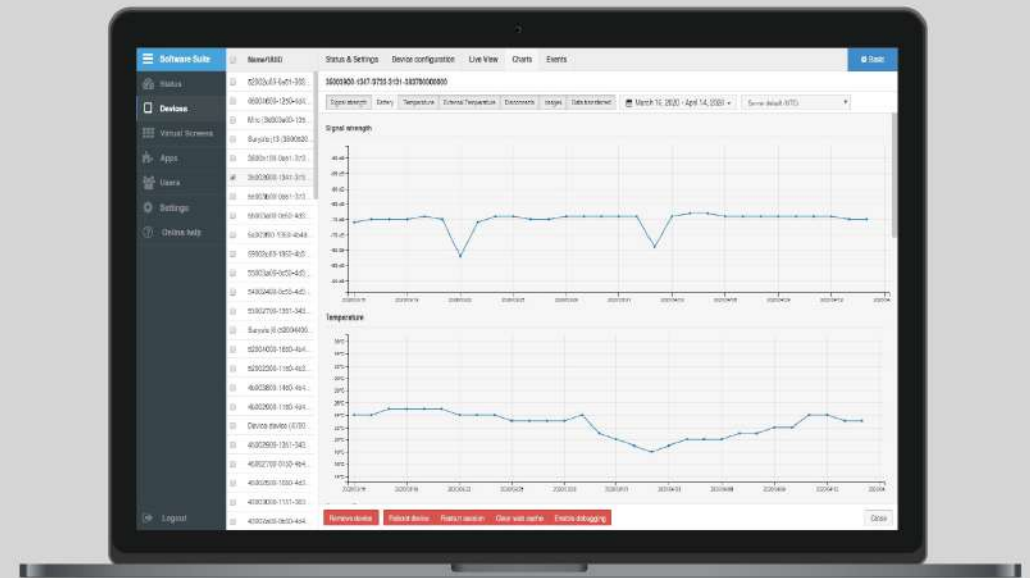
# Visionect Software Suite

- ❑ Cloud based system
- ❑ Docker based installation
- ❑ Interlayer SW connecting device and CMS/APP
- ❑ Server for thin client devices (hosts a session for each client device)
- ❑ Open APIs (fully supported)
- ❑ High volume deployments supported
- ❑ On premise or Cloud installation capabilities



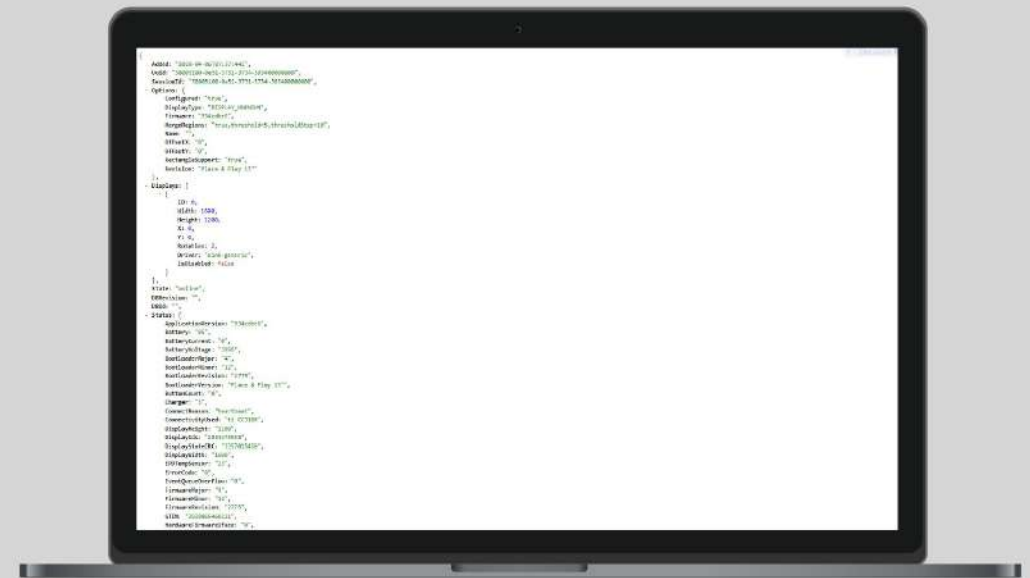
# Visionect Software Suite

- ❑ Server and device status overview
- ❑ Advanced device management
  - Basic content management
  - Status & settings
  - Graphics & color engine
  - Device configuration
  - Live View (content verification)
  - Diagnostic charts
  - Event logs
- ❑ App integration
- ❑ Users management



# Visionect Software Suite API

- ❑ Open API for advanced device management
- ❑ Device remote configuration
- ❑ Special algorithms to enhance the image quality and manage partial updates



Thousands of companies  
already trust Visionect



Technology partners



Awards



# VISIONECT



[www.magicviu.com](http://www.magicviu.com)  
[sales@magicviu.com](mailto:sales@magicviu.com)

